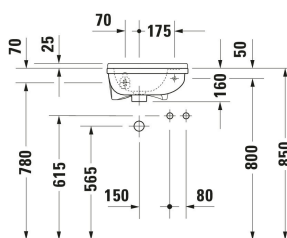
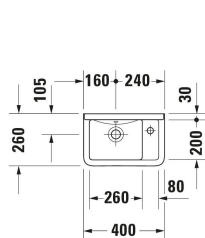


Starck 3 Hand basin # 0751400000

| < 400 mm > |



Hand basin	Dimension	Weight	Order number
Asymmetrical, Tap hole platform: Yes, Overflow: Yes, Underside glazed, Back side glazed: No, 400 mm			
Colors			
00 White Alpin			
Variant			
● White High Gloss, Rectangular, Number of washing areas: 1 Left, Number of faucet holes per wash area: 1 Right		7.860 kg	0751400000
Infobox			
Mandatory in combination with a bottle trap			
Sanitary ceramics with the special WonderGliss surface finish will remain clean and attractive-looking for a long time to come. When ordering WonderGliss please add a "1" as eleventh digit to the model number.			
Accessory			
Push-open waste Suitable for washbasin with overflow, Ø 63,5 mm	Ø 63.5 mm	0.35 kg	005052
Recommended faucets			
single lever basin mixer S Ceramic cartridge, Height: 155 mm, Spout reach: 91 mm, Connection type for water supply connection: Flexible connecting hoses, Dimension of connection hose: 3/8", Spray mode: Normal spray, Aerator adjustable, recommended operating pressure: 1 - 5 bar, Noise class: I, 121 x 40 mm	121 x 40 mm		C11010001
single lever basin mixer S Chrome, Ceramic cartridge, Height: 152 mm, Spout reach: 100,5 mm, Connection type for water supply connection: Flexible connecting hoses, Dimension of connection hose: 3/8", Spray mode: Normal spray, Aerator adjustable, Temperature limit adjustable, recommended operating pressure: 1 - 5 bar, Noise class: I, 137 x 42 mm	137 x 42 mm		B21010001

Starck 3 Hand basin # 0751400000

|< 400 mm >|

<p>single lever basin mixer Ceramic cartridge, Height: 74 mm, Connection type for water supply connection: Basic Set, Spray mode: Normal spray, Aerator adjustable, Including trim parts, recommended operating pressure: 1 - 5 bar, Noise class: I, Unified Water Label (UWL) Class: 1, 173 x 174 mm</p>	173 x 174 mm	C11070003
<p>single lever basin mixer S Chrome, Ceramic cartridge, Height: 155,5 mm, Spout reach: 101 mm, Connection type for water supply connection: Flexible connecting hoses, Dimension of connection hose: 3/8", Spray mode: Normal spray, Aerator adjustable, Temperature limit adjustable, recommended operating pressure: 1 - 5 bar, Noise class: I, 137 x 42 mm</p>	137 x 42 mm	B11010001

All drawings contain the necessary measurements which are subject to standard tolerances. They are stated in mm and are non-binding. Exact measurements, in particular for customised installation scenarios, can only be taken from the finished piece.