

B.1 Single lever bathtub mixer for concealed installation # B15210018010

|< 170 mm >|



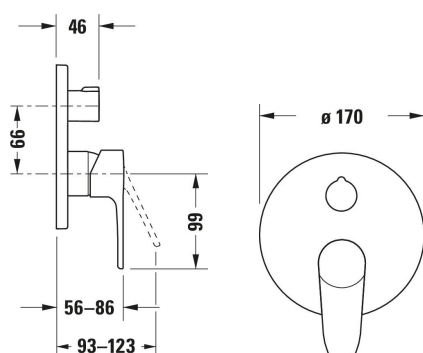
Single lever bathtub mixer for concealed installation	Dimension	Weight	Order number
Number of outlets: 2, Chrome, Connection type for water supply connection: Basic Set, Ceramic cartridge, Consumer selection: Tub filler, Hand shower, Outlet/Diverter: Diverter valve, Security combination, Number of outlets: 2, recommended operating pressure: 1 - 5 bar, Escutcheon shape: Round, Diameter escutcheon: 170 mm, Including functional unit, Including trim parts			
Colors			
10 Chrome			
Variant			
Flow rate (3 bar): 22,5 l/min		2.150 kg	B15210018010
Necessary accessory			
Basic Set Shut-off valve: Yes	164 x 105 mm	1.4 kg	GK0900001
Basic Set Dimensions of water supply connection: DN 15, Shut-off valve: No	164 x 105 mm	1.24 kg	GK0900000
Suitable accessories			
Bath spout Spout reach: 205 mm	75 x 205 mm	0.9 kg	C15240009
Bath spout Spout reach: 205 mm	75 x 205 mm	1.01 kg	C15240010
Hand shower Spray mode: Rain, Dimensions of water supply connection: 1/2", Silicone nubs	245 x 110 mm	0.16 kg	UV0650013
Hand shower MinusFlow, Spray mode: Rain, Dimensions of water supply connection: 1/2", Flow rate (3 bar): 9 l/min, Silicone nubs	245 x 110 mm	0.16 kg	UV0652013
Hand shower Spray mode: Rain, Dimensions of water supply connection: 1/2", Silicone nubs	245 x 110 mm	0.16 kg	UV0650014

B.1 Single lever bathtub mixer for concealed installation # B15210018010

| < 170 mm > |

Hand shower MinusFlow, Spray mode: Rain, Dimensions of water supply connection: 1/2", Flow rate (3 bar): 9 l/min, Silicone nubs	245 x 110 mm	0.16 kg	UV0652014
Hand shower Spray mode: SoftRain, Rain, IntenseRain, Dimensions of water supply connection: 1/2", Spray mode selection: Rotating blasting disc, Silicone nubs	245 x 110 mm	0.2 kg	UV0650015
Hand shower MinusFlow, Spray mode: SoftRain, Rain, IntenseRain, Dimensions of water supply connection: 1/2", Spray mode selection: Rotating blasting disc, Flow rate (3 bar): 9 l/min, Silicone nubs	245 x 110 mm	0.2 kg	UV0652015
Hand shower Spray mode: SoftRain, Rain, IntenseRain, Dimensions of water supply connection: 1/2", Spray mode selection: Rotating blasting disc, Silicone nubs	245 x 110 mm	0.2 kg	UV0650016
Hand shower MinusFlow, Spray mode: SoftRain, Rain, IntenseRain, Dimensions of water supply connection: 1/2", Spray mode selection: Rotating blasting disc, Flow rate (3 bar): 9 l/min, Silicone nubs	245 x 110 mm	0.2 kg	UV0652016
Hand shower Spray mode: Rain, Pulse, Mono, Dimensions of water supply connection: 1/2", Spray mode selection: Push button, Silicone nubs	240 x 120 mm	0.24 kg	UV0650017
Hand shower MinusFlow, Spray mode: Rain, Pulse, Mono, Dimensions of water supply connection: 1/2", Spray mode selection: Push button, Flow rate (3 bar): 9 l/min, Silicone nubs	240 x 120 mm	0.24 kg	UV0652017
wall outlet Round, Non-return valve: Individually, in the hose connection, Escutcheon shape: Round, Dimensions of water supply connection: DN 15	55 x 102 mm	0.3 kg	UV0630009
wall outlet Square, Non-return valve: Individually, in the hose connection, Escutcheon shape: Square, Dimensions of water supply connection: DN 15	55 x 102 mm	0.3 kg	UV0630010
Shower hose Rotation lock: Yes, Dimensions of water supply connection: 1/2", Nut shape: Conical	1250 x 23 mm	0.28 kg	UV0610006
Shower hose Rotation lock: Yes, Dimensions of water supply connection: 1/2", Nut shape: Conical	1600 x 23 mm	0.34 kg	UV0610007
Shower hose Rotation lock: Yes, Dimensions of water supply connection: 1/2", Nut shape: Conical	1800 x 23 mm	0.37 kg	UV0610008

All drawings contain the necessary measurements which are subject to standard tolerances. They are stated in mm and are non-binding. Exact measurements, in particular for customised installation scenarios, can only be taken from the finished piece.



B.1 Single lever bathtub mixer for concealed installation #
B15210018010

|< 170 mm >|