



SensoWash®

安装说明

Mounting instructions

智能电子坐便器

Shower toilet unit



重要说明

ZH-CHS

3

Important information

EN

5



安装, Mounting

7



ZH-CHS

1 关于文件

本产品所有文档以及更多信息可在线获取：

> 登录 qr.duravit.com 或 www.duravit.cn 访问在线文档。

2 安全

2.1 文件用途

本手册是 Duravit 产品的组成部分。不遵循其中的内容可能会导致人身伤害、产品损坏或财产损失。

> 请阅读并遵照手册中的要求。

> 妥善保管本文档，并将其交给下一任用户。

我们保留图示产品的技术改进和外观修改的权利。

2.2 安装人员及资质

只能由有资质的管道安装工实施安装工作。

- 有资质的管道安装工是指经过相关技术培训，具备专业知识和经验的人员，他们能够识别并避免在卫生设备安装过程中可能出现的危险和风险。
- 有资质的管道安装工能选用适当的防护设备。
- 有资质的管道安装工了解并遵守当地供水供电企业的安装规定和国家/地区特定标准。

电气安装仅允许由专业电工实施。

- 专业电工是指经过相关技术培训，具备专业知识和经验的人员，他们能够识别并避免电力可能产生的危险和风险。
- 专业电工能选用适当的防护设备。
- 专业电工熟悉并遵守当地供水供电企业的安装规定和国家/地区特定标准。

2.3 电气安全

2.3.1 电击可导致生命危险

与电接触会导致致命电击。

2.3.2 一般注意事项

- > 请仅将本产品连接至指定电源。
- > 产品必须正确接地。只有在接地正确的情况下才可使用本产品。
- > 在安装前将电气元件与电源断开。
- > 避免意外接通供电。
- > 检查所有元件是否无电压。
- > 切勿用湿手触摸电源线。
- > 如果电源电缆损坏，为了避免危险，必须由制造商、其维修部或类似部门的专业人员更换。
- > 禁止拆卸单独零部件。

2.3.3 避免冷凝

- > 切勿将产品安装在过于潮湿的房间内。确保通风良好，以防止电气元件上出现冷凝。
- > 如果产品从低温处移到暖和的地方，请先将其关闭几个小时以避免可能的冷凝。

2.4 卫生

2.4.1 脏水、污水或长期积水对健康的损害

使用脏水、污水或长期积水进行清洗可能会危害健康。

- > 本设备仅可使用来自自主供水管道的冷饮用水。
- > 请勿连接废水、脏水、工业用水、海水或其他未处理和半处理的水。
- > 只能使用附带的专用进水软管，请勿使用旧软管。
- > 如果产品已经有两周或更长时间没有使用，请启动额外的自洁功能。

2.5 避免产品损坏

2.5.1 一般注意事项

- > 请仅使用安装套装中的部件，以防发生故障。
- > 请仅使用 Duravit 推荐的附件。

2.5.2 冻水造成的损坏

- > 请勿在有霜冻风险的房间内安装和使用本产品。室内温度不得低于 4 °C (39 °F)。

2.5.3 水垢造成的损坏

硬水质地区可能会沉积水垢。水垢会影响产品的性能。

- > 请检查该地区的水质。如果水的硬度 $\geq 14^\circ \text{dH}$ (2.5 mmol/l)，Duravit 建议安装软水装置。

3 安装现场要求

陶瓷安装正确。

- > 请遵守单独的安装说明。



4 技术数据

电气连接	
额定电压	220 - 240 V, 50 - 60 Hz
额定功率	1080 W
断路器	$I_N = 16 \text{ A}$
RCD	$I_N = 30 \text{ mA}$
防护类型	IPX4
防护等级	I
电缆规格	供电线的横截面 1 - 2.5 mm ² (17 - 14 AWG)

连接水管	
冷水	DN 15 (½")
水压	0.07 - 0.75 MPa (10 - 109 psi)
水硬度	最大 2.4 mmol/l (240 ppm)

5 安装说明

坐便器座盖安装方案：

- 方案 A：安装于挂壁式坐便器上。
- 方案 B：安装于连体式坐便器上。

1 + 21 遵循安装说明

> 请遵守单独的安装说明。

2 检查产品

> 检查产品是否有损。

4 连接软管

> 请使用坐便器随附的软管。

6 + 23 选择并固定安装夹

供货范围中包含各种安装夹。

> 请根据电缆直径选择安装夹。

8 + 25 连接电缆

⚠ 警告

电击可导致生命危险

与电接触会导致致命电击。

> 阅读并遵照本手册安全章节中的信息。

> 从电线上去除大约 10 mm (¾") 长的绝缘层。

> 将这三根线连接到端子排上。注意区分火线、零线和地线。

> 确保接地线比火线和零线长 10 mm (¾")。

11 - 12 使用电子操作板安装接口（可选）

仅适用于：

#612000 01 2 00 2320 #612001 01 2 00 2310
#612001 01 2 40 2310, #612000 01 2 40 2320.
#612002 01 2 00 2300, #612002 01 2 40 2300 通过蓝牙连接。

> 使用 DuraSystem® 操作板 A2 安装功能接口的接口套件。

> 请遵守单独的说明书。

17 + 30 检查密闭性

> 检查密闭性。

遥控器安装方案：

- 方案 A：黏贴或螺纹连接 [► 12]
- 方案 B：黏贴或螺纹连接 [► 14]

A8 + A17 B8 + B17 产品测试

> 检查产品是否正常工作。

> 请遵循操作手册。

⚠ 注意

脏水、污水或长期积水对健康的损害

使用脏水、污水或长期积水进行清洗可能会危害健康。

> 如果产品已经有两周或更长时间没有使用，请启动额外的自洁功能。



EN

1 About this document

All documents related to this product and further information are available online:

- > Access the online documents via qr.duravit.com or www.duravit.cn.

2 Safety

2.1 Purpose of the document

The instructions are part of the Duravit product. Failure to follow the instructions may result in personal injury, product damage and/or property damage.

- > Read and follow the instructions.
- > Keep this document and pass it on to subsequent users.

We reserve the right to make technical improvements and visual changes to the products illustrated.

2.2 Target readership and qualifications

All work associated with the installation may only be undertaken by plumbers.

- Plumbers are persons with the appropriate technical training, knowledge and experience so that they can recognise and avoid dangers and risks that may arise during the installation in the sanitary area.
- Plumbers are qualified to select and use suitable protective equipment.
- Plumbers are familiar with and observe the installation regulations of local utility companies and country-specific standards.

The electrical installation may only be carried out by an electrician.

- Electricians are persons with the appropriate technical training, knowledge and experience so that they can recognise and avoid dangers and risks that may be caused by the electricity.
- Electricians are qualified to select and use suitable protective equipment.
- Electricians are familiar with and observe the installation regulations of local utility companies and country-specific standards.

2.3 Electrical safety

2.3.1 Risk of fatal injury caused by electric shock

Contact with electricity can lead to a fatal electric shock.

2.3.2 General precautions

- > Connect the product only to the specified power supply.
- > The product must be earthed. Do NOT operate the product without proper grounding.
- > Disconnect electrical components from the power supply before the installation.
- > Prevent the power supply from being switched on accidentally.
- > Check that all components are de-energised.
- > NEVER touch the power supply cable with wet hands.
- > If the power supply cable on this product is damaged, it must be replaced by the manufacturer, the customer service agent or similarly qualified persons in order to avoid a hazard.
- > Do NOT remove individual components.

2.3.3 Avoid condensation

- > Do NOT install the product in a room exposed to excessive moisture. Ensure sufficient ventilation to avoid condensation in electric components.
- > When the product is brought from a cold location to a warm one, leave the unit switched off for a few hours to avoid condensation.

2.4 Hygiene

2.4.1 Damage to health caused by dirty, polluted or long standing water

Operating the shower functions with dirty, polluted or long standing water can cause damage to health.

- > Supply the product with cold drinking water from the main water system.
- > Do NOT connect any waste water, grey water, industrial water, sea water or other untreated or semi-treated water.
- > Only use the water supply hoses provided with the product. Do NOT reuse old hoses.
- > If the product has NOT been used for two weeks or more, activate the additional self-cleaning.

2.5 Avoid product damage

2.5.1 General precautions

- > Only use the parts in the installation kit to avoid malfunctions.
- > Only use attachments recommended by Duravit.



2.5.2 Damage through freezing water

- > Do NOT install and operate the product in rooms where there is a danger of frost. The room temperature must not be less than 4 °C (39 °F).

2.5.3 Damage due to limescale build-up

Limescale can build-up in regions with hard water. Limescale can impair the performance of the product.

- > Check the water quality in the region. Duravit recommends the installation of a water softener with water hardness ≥ 14 °dH (2.5 mmol/l).

3 Requirements at the installation location

The toilet bowl is installed properly.

- > Observe the separate mounting instructions.

4 Technical data

Electrical connection	
Rated voltage	220 – 240 V, 50 – 60 Hz
Rated power	1080 W
Circuit breaker	$I_N = 16$ A
RCD	$I_N = 30$ mA
Protection degree	IPX4
Protection class	I
Cable specification	Supply line cross section 1 – 2.5 mm ² (17 – 14 AWG)

Water connection	
Cold water	DN 15 (½")
Water pressure	0.07 – 0.75 MPa (10 – 109 psi)
Water hardness	Max. 2.4 mmol/l (240 ppm)

5 Mounting instructions

Installation options seat unit:

- Option A: Installation on wall mounted toilet.
- Option B: Installation on one piece toilet.

1 + 21 Observe mounting instructions

- > Observe the separate mounting instructions.

2 Inspecting the product

- > Inspect the product for damages.

4 Connecting the hose

- > Use the hose delivered with the toilet.

6 + 23 Choosing and installing mounting clip

The delivery contains several mounting clips.

- > Choose the mounting clip according to cable diameter.

8 + 25 Connecting the wires



WARNING

Risk of fatal injury caused by electric shock

Contact with electricity can lead to a fatal electric shock.

- > Read and observe the information given in the safety chapter of this manual.
- > Remove approximately 10 mm (¾") of insulation from the wires.
- > Connect the three wires to the terminal block. Observe the L, N and PE conductors.
- > Ensure that the protective earthing conductor is 10 mm (¾") longer than the L and N conductor.

11 – 12 Installing interface with electronic actuator plate (optional)

Applies only to:

#612000 01 2 00 2320 #612001 01 2 00 2310 #612001 01 2 40 2310, #612000 01 2 40 2320. #612002 01 2 00 2300, #612002 01 2 40 2300 are connected via Bluetooth.

- > Install the Interface Set for functional interface with DuraSystem® actuator plate A2.
- > Observe the separate manual.

17 + 30 Checking for leaks

- > Check for leaks.

Installation options remote control:

- Option A: glued or screwed [► 12]
- Option B: glued or screwed [► 14]

A8 + A17 B8 + B17 Testing the product

- > Check if the product works properly.
- > Observe the user manual.

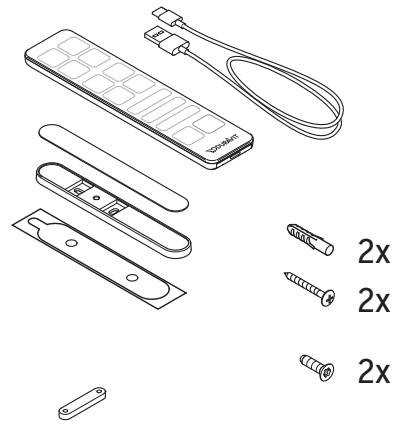
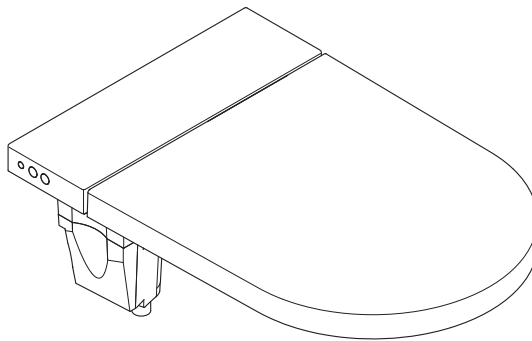


CAUTION

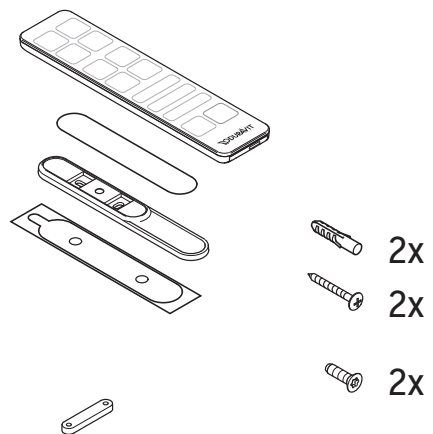
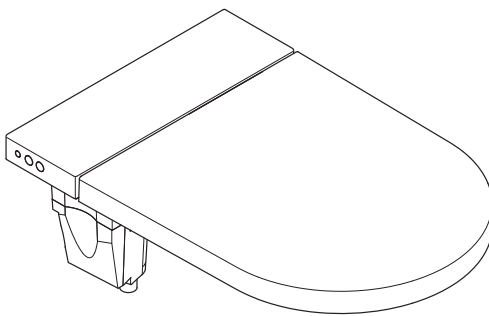
Damage to health caused by dirty, polluted or long standing water

Operating the shower functions with dirty, polluted or long standing water can cause damage to health.

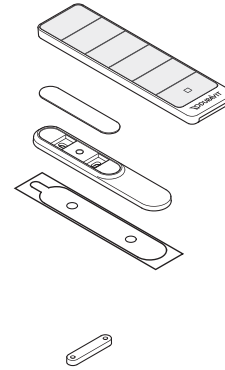
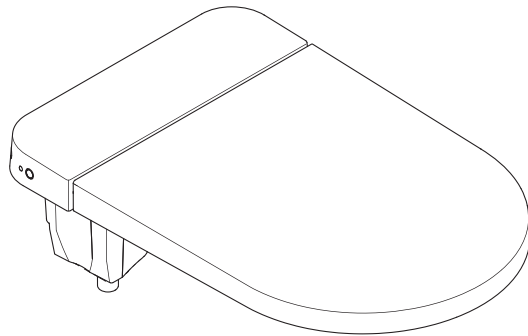
- > If the product has NOT been used for two weeks or more, activate the additional self-cleaning.



#612002 01 2 00 2300
#612002 01 2 40 2300

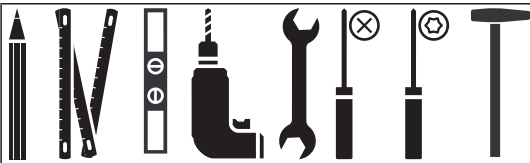


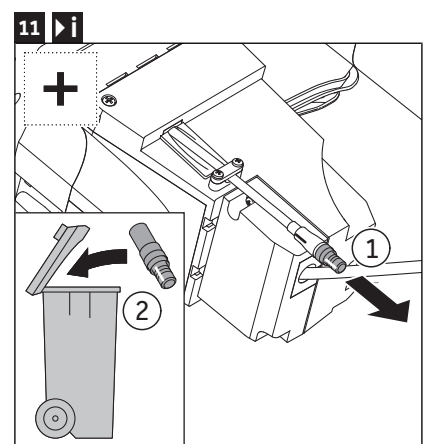
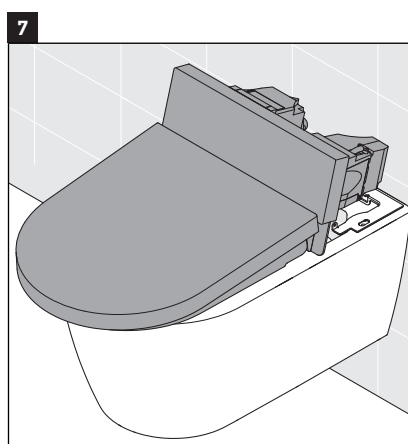
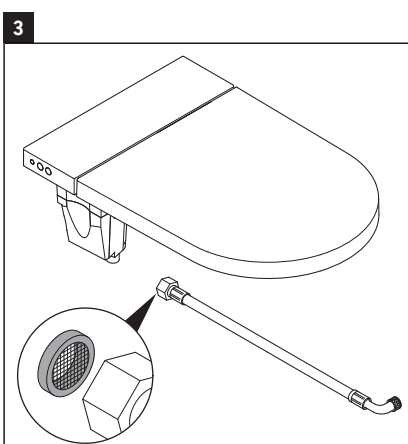
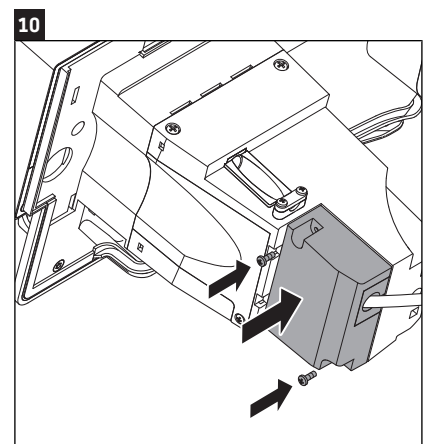
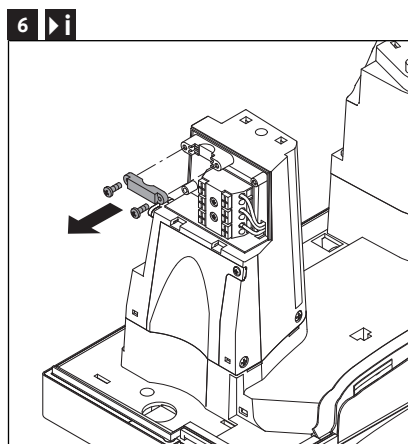
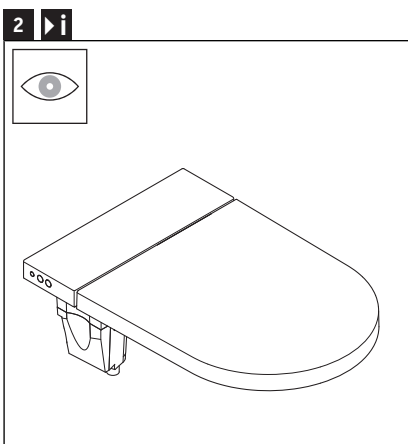
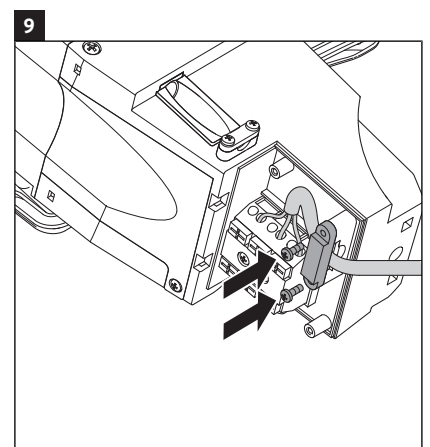
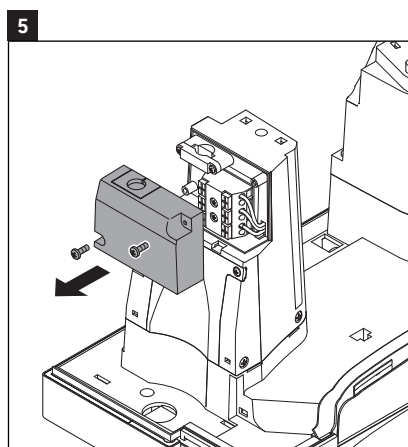
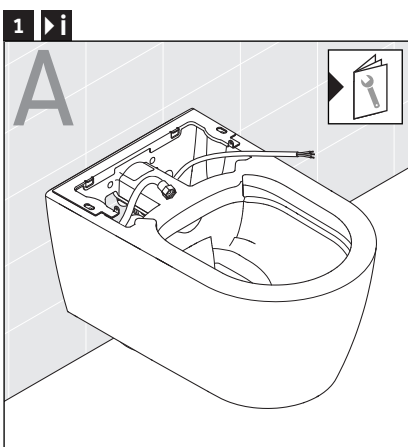
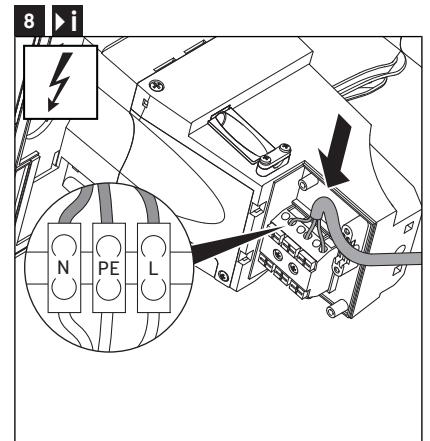
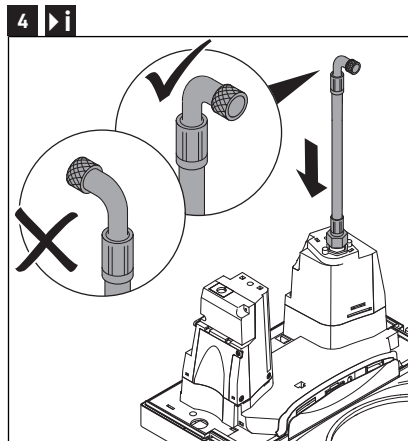
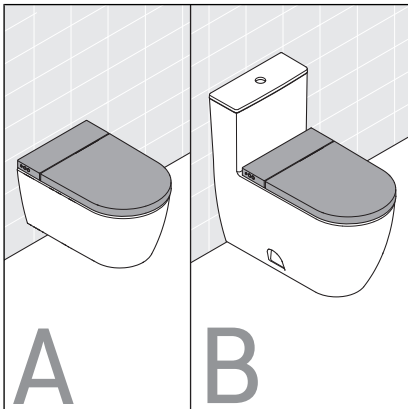
#612000 01 2 00 2320
#612001 01 2 00 2310
#612001 01 2 40 2310
#612000 01 2 40 2320

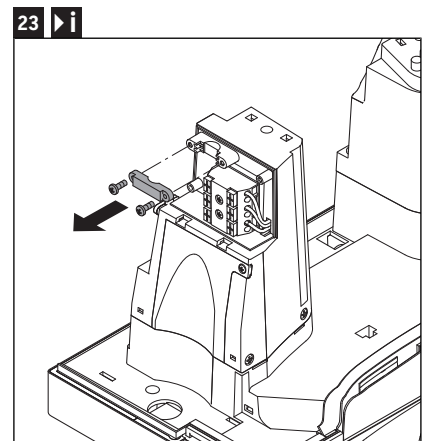
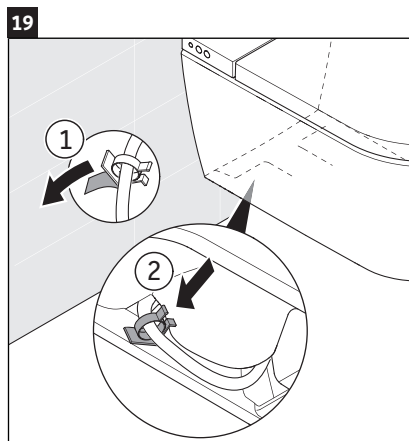
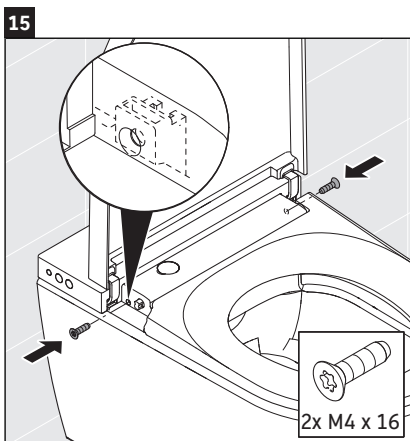
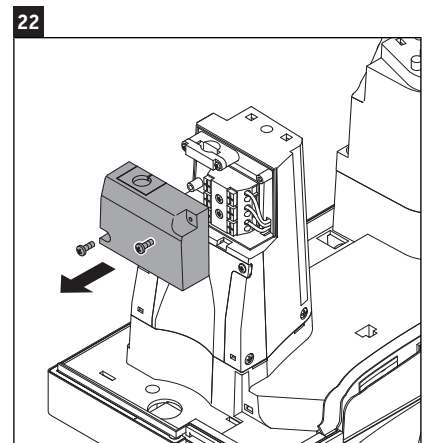
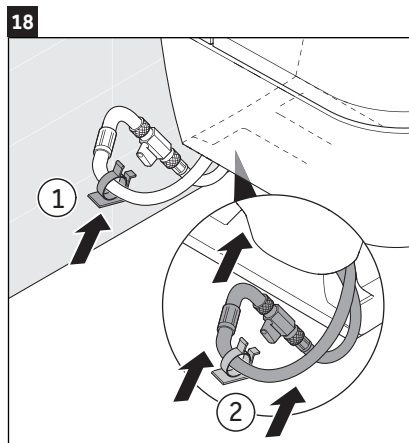
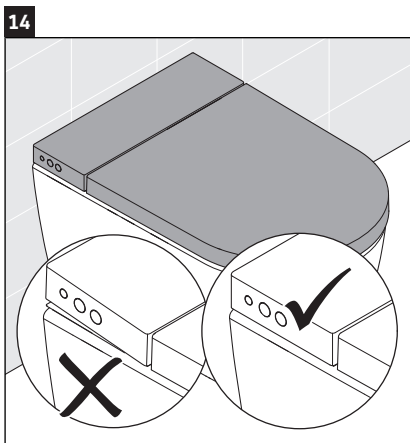
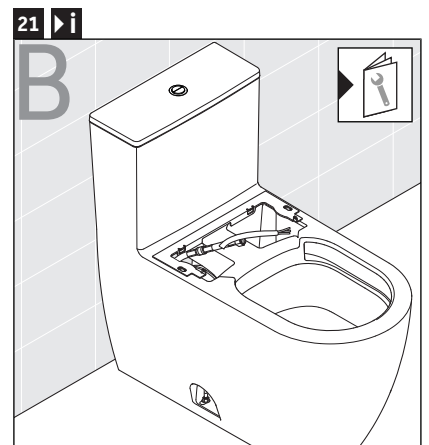
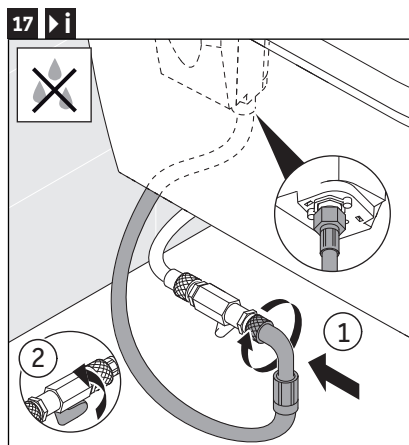
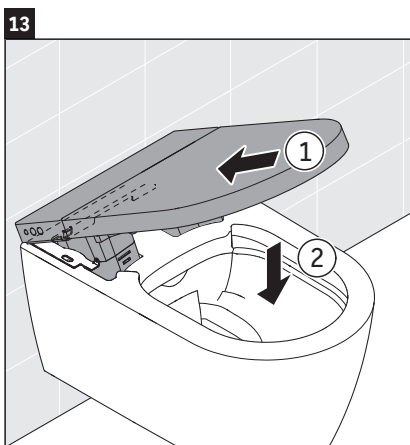
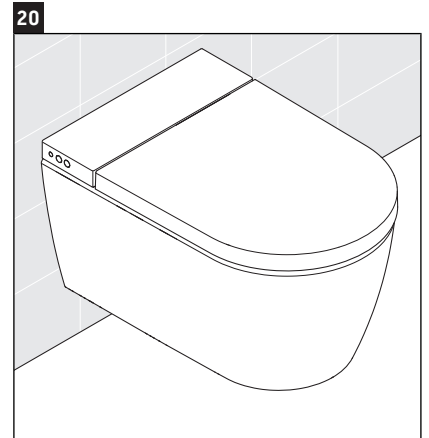
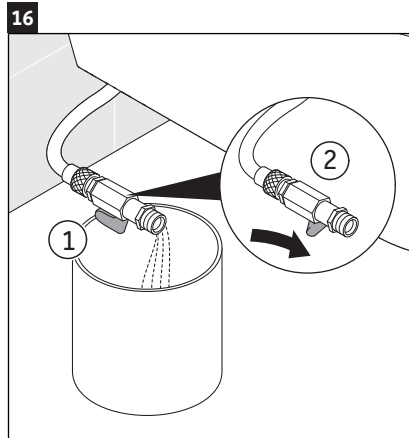
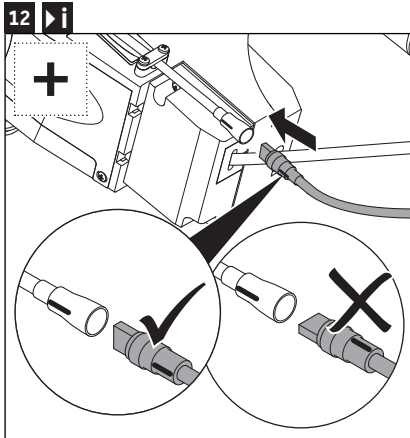


2x
2x
2x

#614700 01 2 00 2300

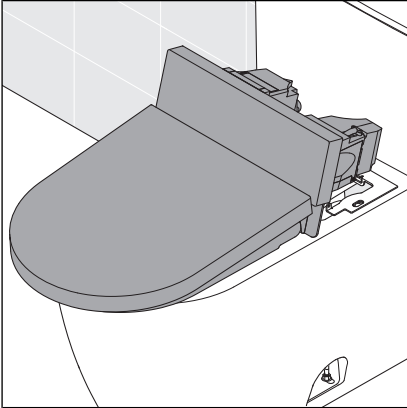




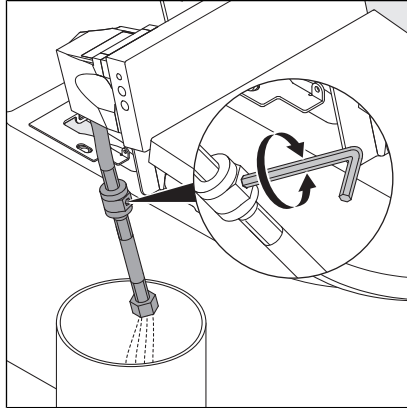




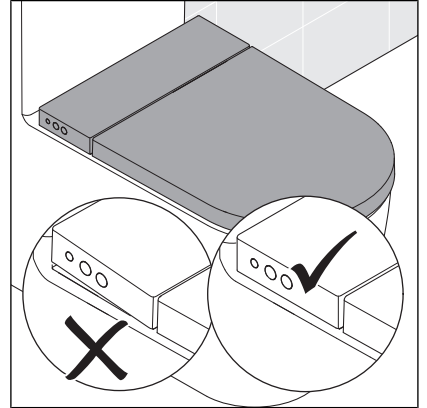
24



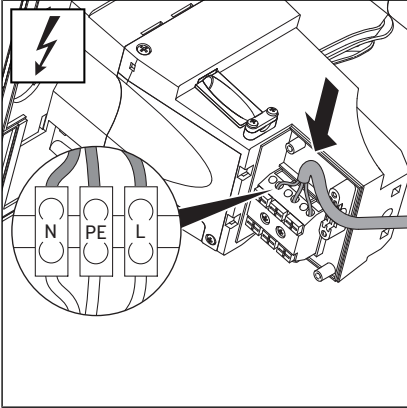
28



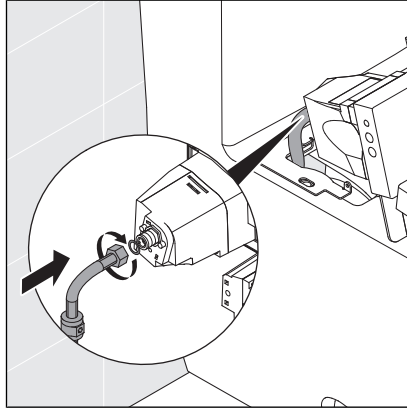
32



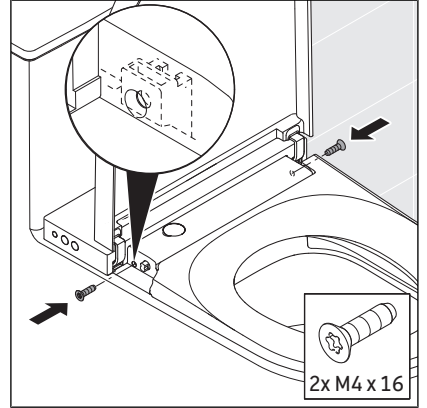
25 ▶ i



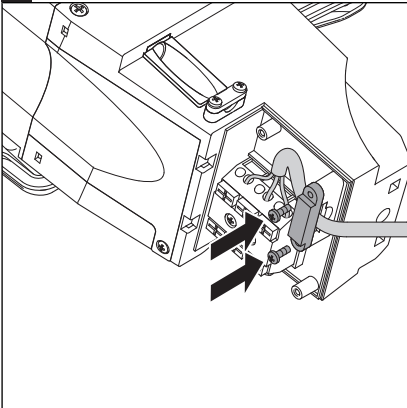
29



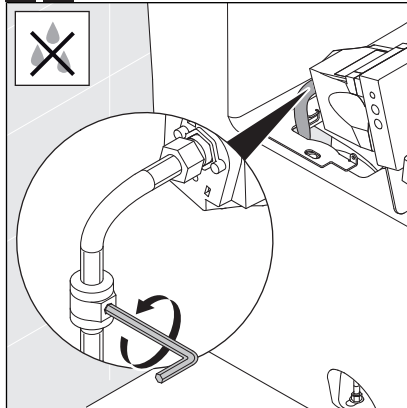
33



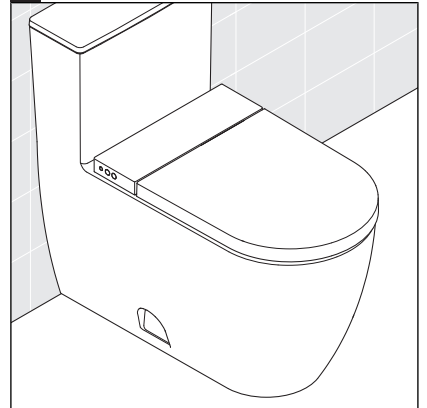
26



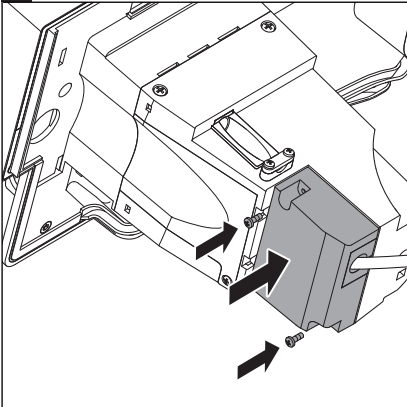
30 ▶ i



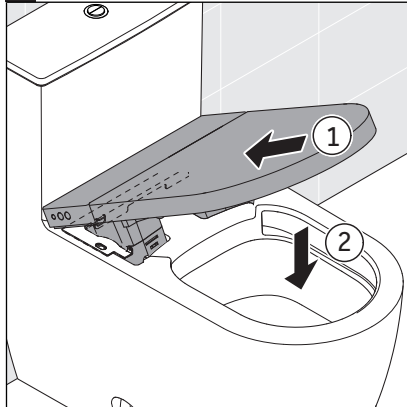
34

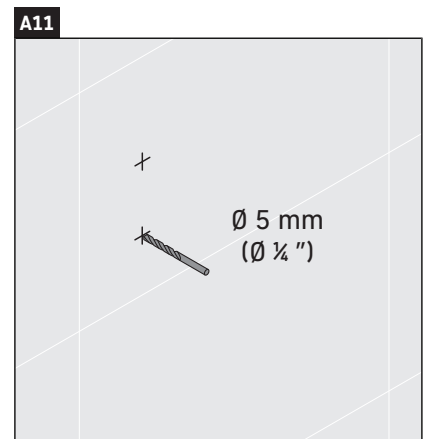
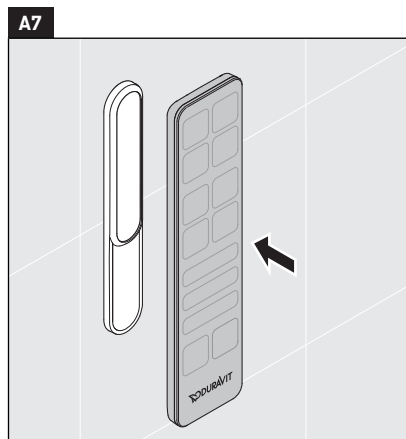
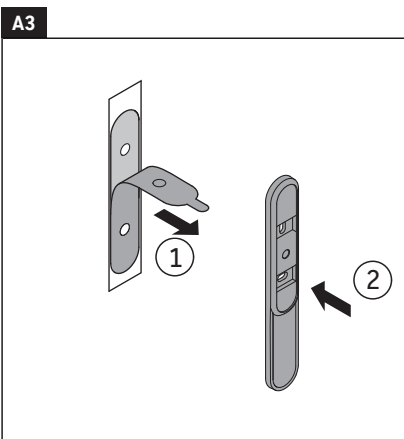
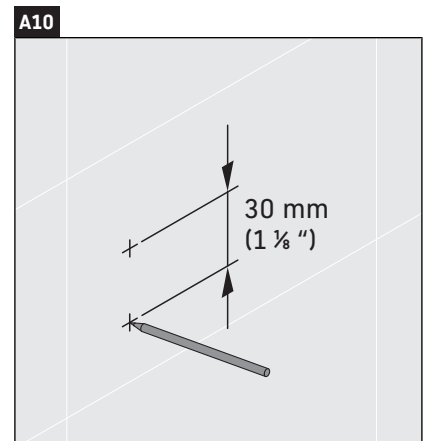
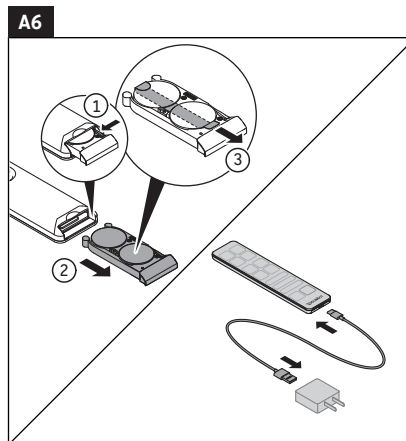
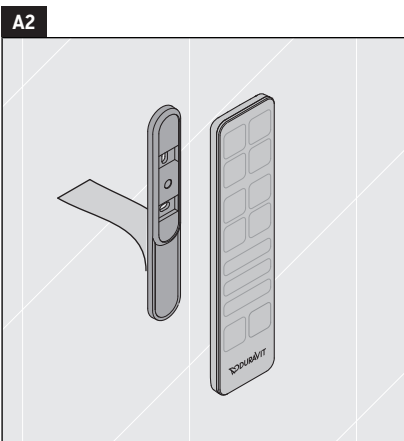
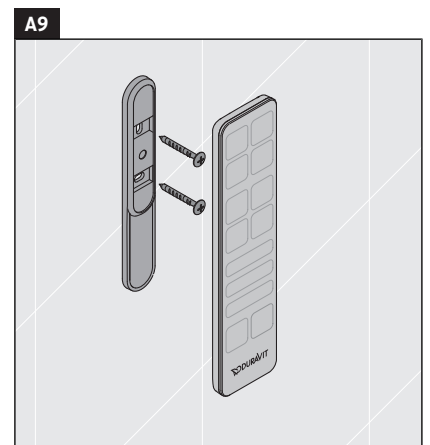
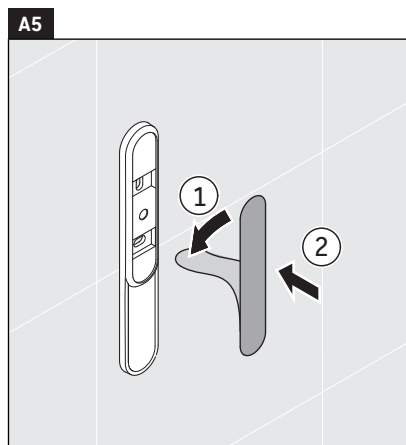
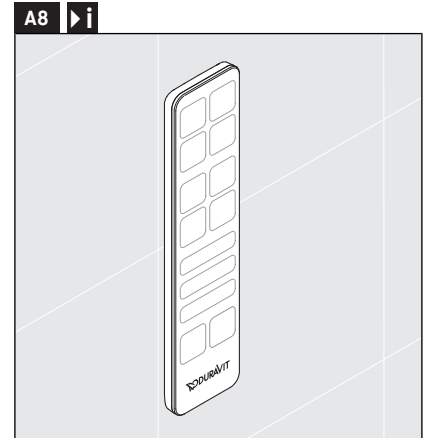
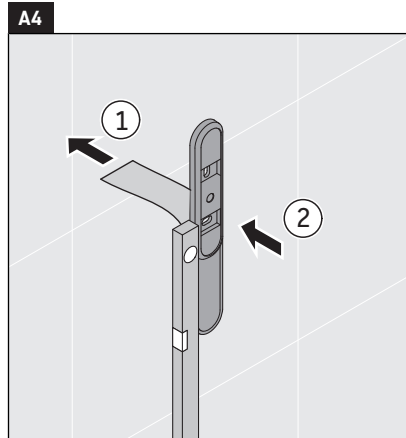
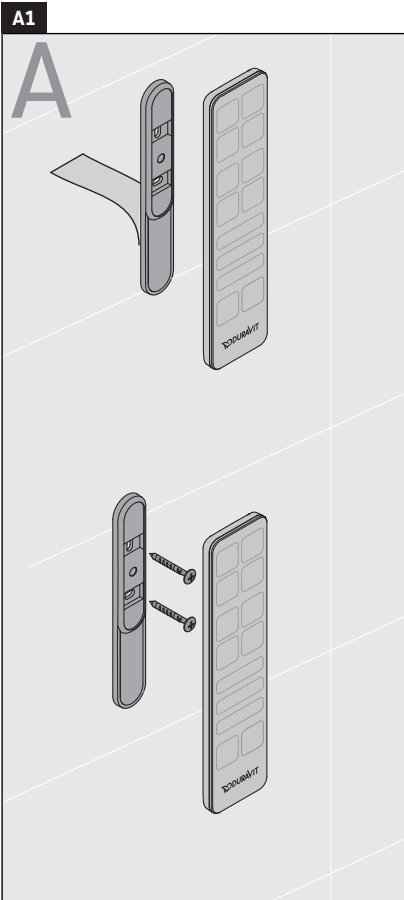


27



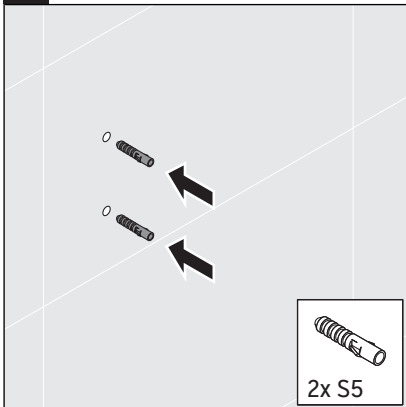
31



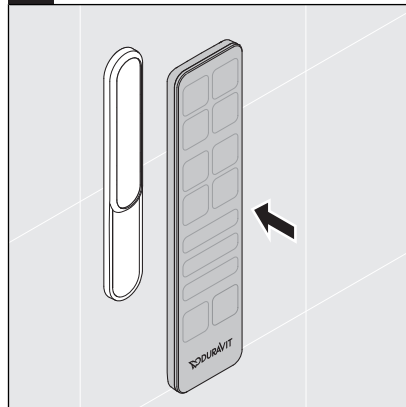




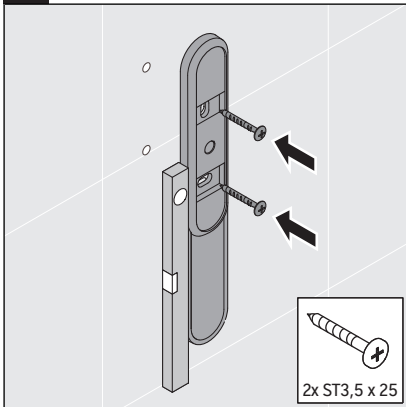
A12



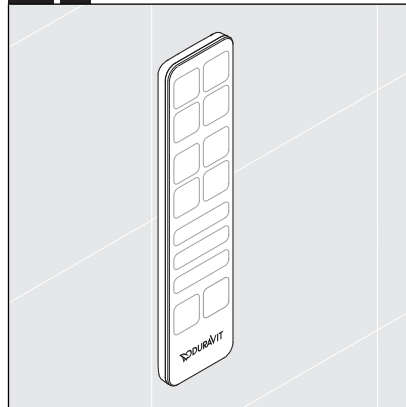
A16



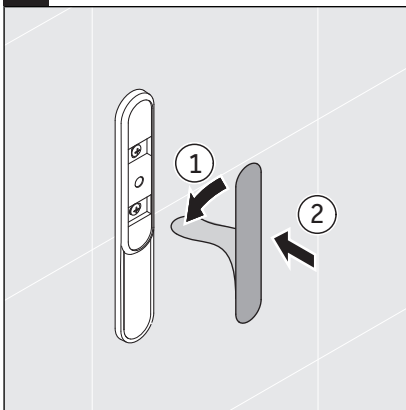
A13



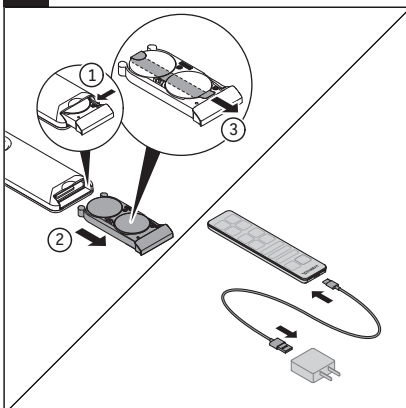
A17 ▶ i

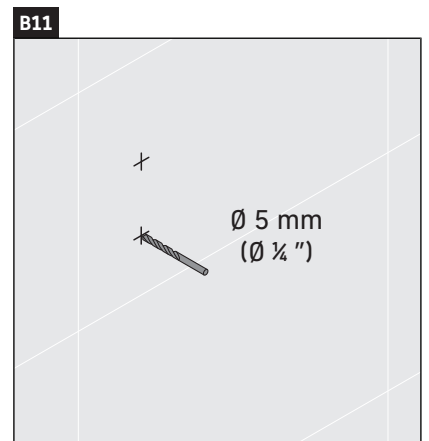
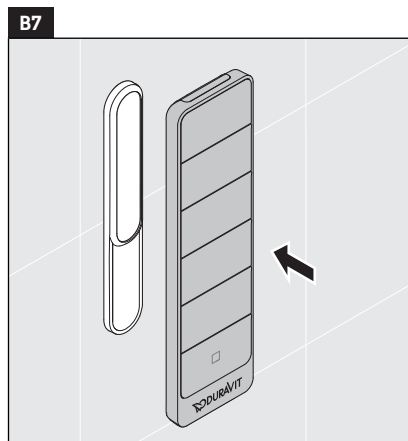
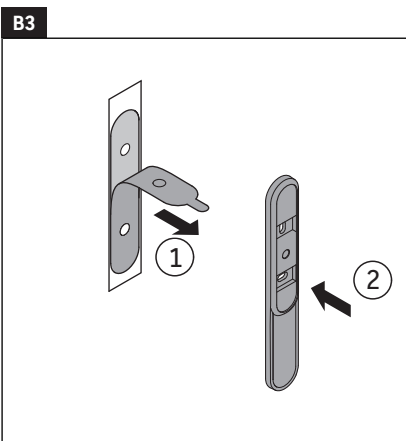
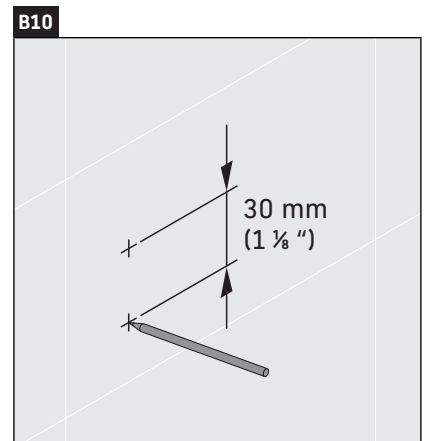
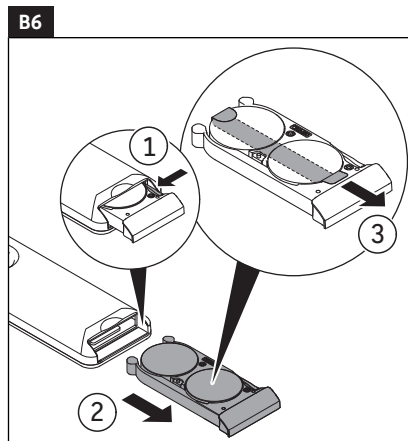
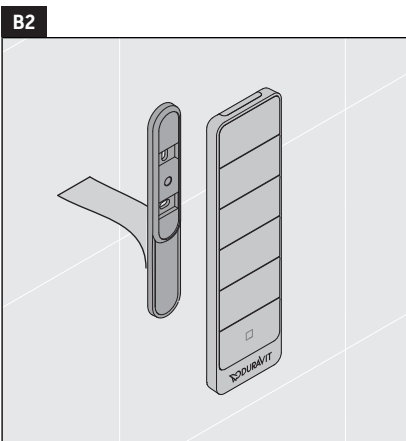
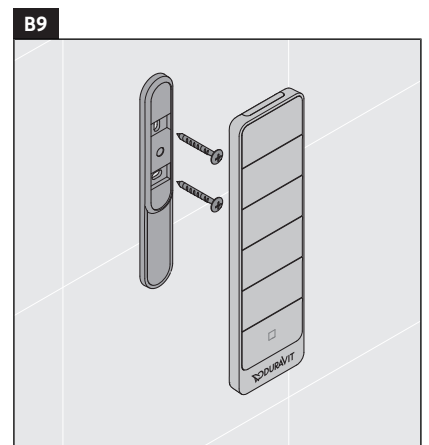
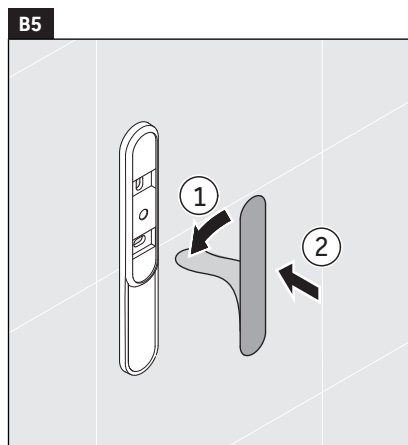
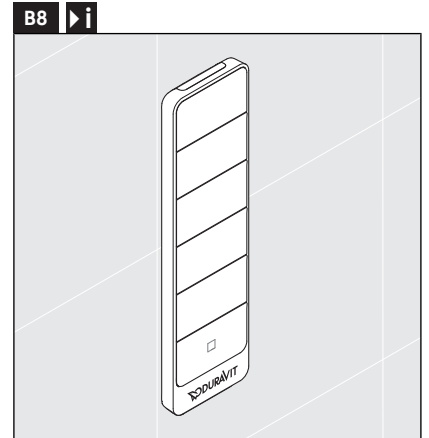
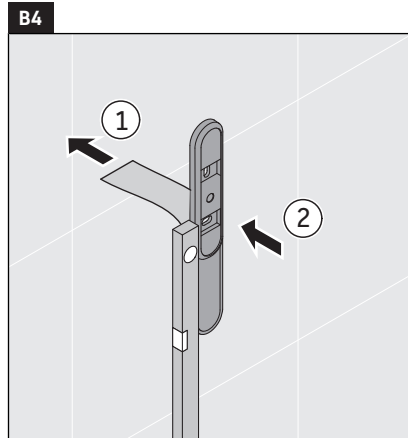
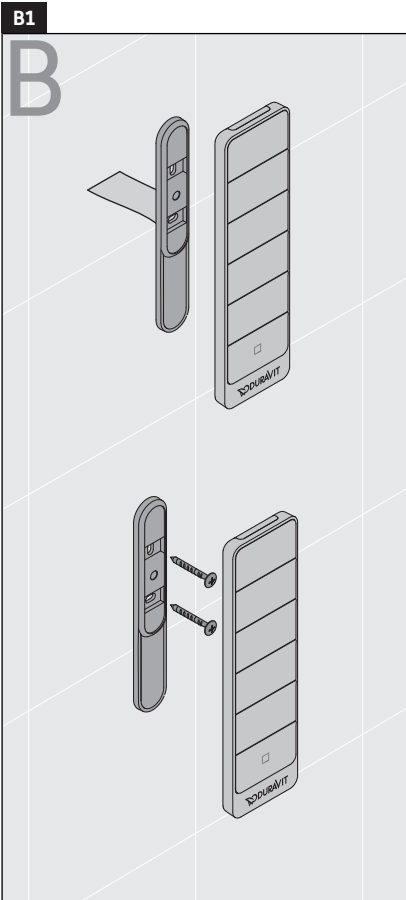


A14



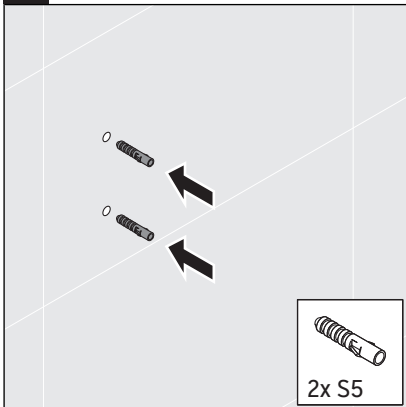
A15



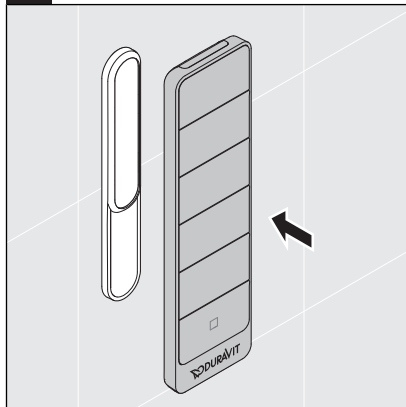




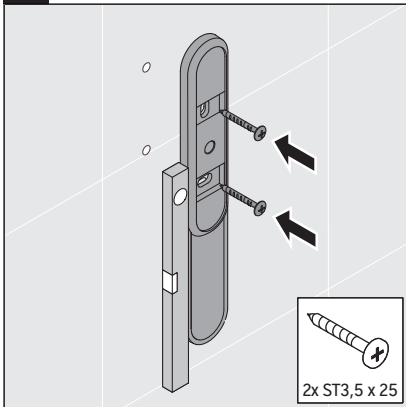
B12



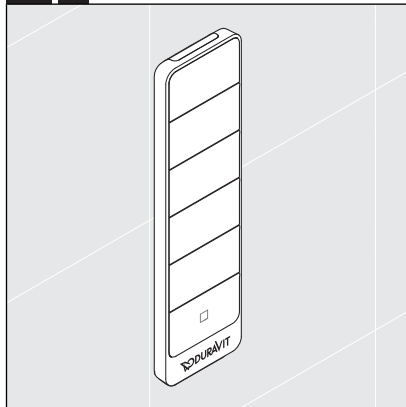
B16



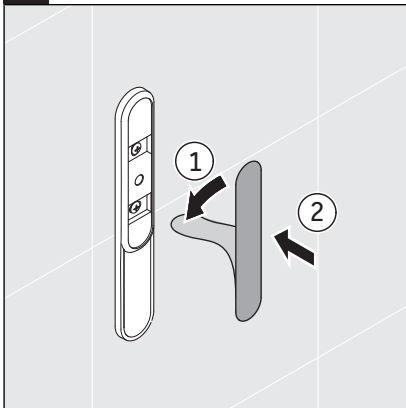
B13



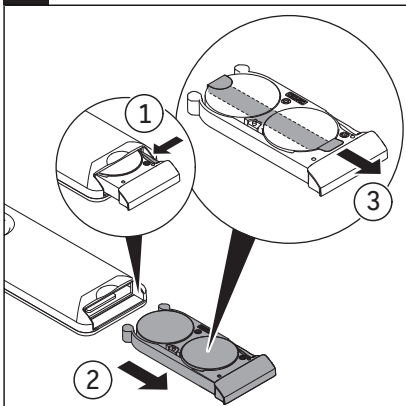
B17



B14



B15



Duravit AG
P.O. Box 240
Werderstr. 36
78132 Hornberg
Germany
Phone +49 78 33 70 0
Fax +49 78 33 70 289
info@duravit.com
www.duravit.com

杜拉维特（中国）洁具有限公司
重庆市江津区珞璜工业园B区园区大道88号
客服电话 +86 400 105 1055
周一至周五 9:00-12:00; 13:00-17:00
info@cn.duravit.com
www.duravit.cn
www.sensowash.cn

