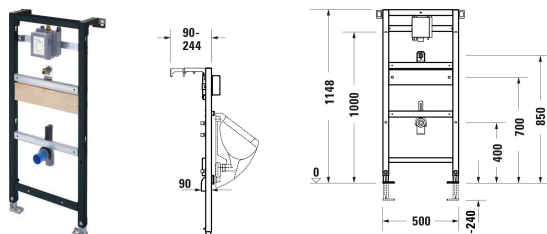


DuraSystem® Installation element for urinal # WD3004000000

| < 500 mm > |



Installation element for urinal	Dimension	Weight	Order number
Powder-coated, Type of installation: In standard lightweight construction, In front of solid wall, Type of mounting: Drywall, Height adjustable: 240 mm, Flush operation: Mechanical, Electronic, Flush operation position: Front, Material of cross bars: Wood, Suitable for panelling with plasterboards, Meter marking, Center marker, Height adjustable cross bars: 240 mm, Incl. drain pipe clamp DN 50, Incl. plinth legs, Incl. HT- outlet bend DN 50, Incl. mounting accessories for single installation, Incl. mounting accessories for lightweight construction, Inkl. schallgedämmte Wandscheiben G1/2			
Colors			
00 White Alpin			
Variant			
		12.000 kg	WD3004000000
Suitable products			
Electronic actuator plate for urinal A2 battery supply, Cast zinc, Single Flush, Flush operation: Infra-red controlled, Flush operation technology: Touchless, Type of installation: surface mounted, Incl. installation frame, Including mounting kit, Protection type: IPX4	130 x 10 mm	0.8 kg	WD5006
Electronic actuator plate for urinal A2 power supply, Cast zinc, Single Flush, Flush operation: Infra-red controlled, Flush operation technology: Touchless, Type of installation: surface mounted, Incl. installation frame, Including mounting kit, Protection type: IPX4	130 x 10 mm	0.9 kg	WD5007
Installation accessories			
Mechanical actuator plate for urinal A1 Plastic, Single Flush, Flush operation: Mechanical, Flush operation technology: Manual, Type of installation: surface mounted, Incl. installation frame, Including mounting kit, Incl. adjustable flushing valve	131 x 10 mm	0.3 kg	WD5004
Mechanical actuator plate for urinal A1 Glass, Single Flush, Flush operation: Mechanical, Flush operation technology: Manual, Type of installation: surface mounted, Incl. installation frame, Including mounting kit, Incl. adjustable flushing valve	141 x 14 mm	0.7 kg	WD5005
Extension set Suitable for increased installation height	230 x 310 mm	1.73 kg	WD6012
Noise reduction set	65 x 35 mm	0.057 kg	WD6015

DuraSystem® Installation element for urinal # WD3004000000

|< 500 mm >|

All drawings contain the necessary measurements which are subject to standard tolerances. They are stated in mm and are non-binding. Exact measurements, in particular for customised installation scenarios, can only be taken from the finished piece.