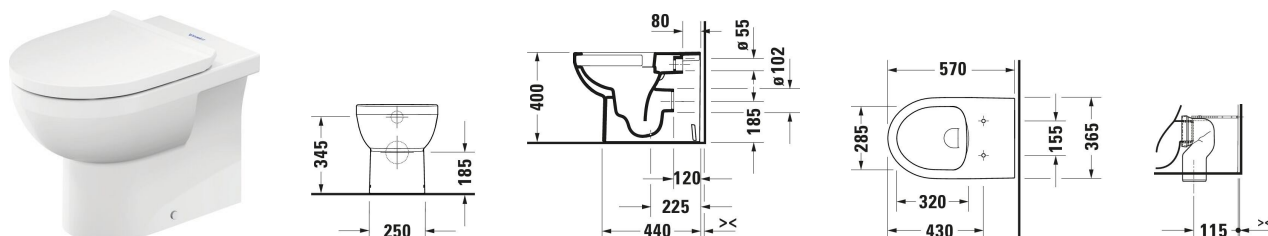


Duravit No.1 Floorstanding toilet # 200909..002 / 200909..002

| < 365 mm > |



Floorstanding toilet	Dimension	Weight	Order number
Back to wall version, Flush water quantity: 4,5/3 l, washdown model, Flushing rim: Rimless, Outlet drain: horizontal, Position outlet: Back, Flush principle: washdown model, Incl. mounting material, Unified Water Label (UWL) Class: 1			
Colors			
00 White Alpin 20 HygieneGlaze (an antibacterial ceramic glaze that provides almost indefinite effectiveness)			
Variant			
White High Gloss, Flush water quantity: 4,5 l, Washdown model		28.700 kg	200909..002
White High Gloss, HygieneGlaze, Washdown model		28.700 kg	200909..002
Suitable products			
Toilet seat Automatic close: No, Hinge material: Stainless steel, 376 x 446 mm	376 x 446 mm		006420
Toilet seat Automatic close: Yes, Hinge material: Stainless steel, 453 x 374 mm	453 x 374 mm		006429
Toilet seat Shape: Rectangular, Automatic close: Yes, Hinge material: Stainless steel, 373 x 430 mm	373 x 430 mm		002079
Toilet seat Shape: Rectangular, Automatic close: No, Hinge material: Stainless steel, 373 x 430 mm	373 x 430 mm		002071

All drawings contain the necessary measurements which are subject to standard tolerances. They are stated in mm and are non-binding. Exact measurements, in particular for customised installation scenarios, can only be taken from the finished piece.