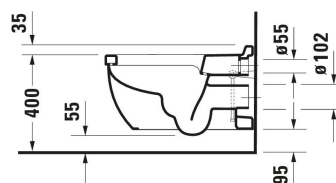
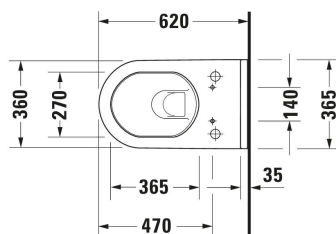


Starck 3 Toilet wall-mounted for shower toilet seat # 222659..00 / 222659..00

| < 365 mm > |



Toilet wall-mounted for shower toilet seat	Dimension	Weight	Order number
Flush water quantity: 4,5/3 l, Washdown model, Flushing rim: Closed, Flush principle: washdown model, Outlet drain horizontal, Incl. invisible fixation, Incl. connecting set for SensoWash, Unified Water Label (UWL) Class: 1			
Colors			
00 White Alpin 20 HygieneGlaze (an antibacterial ceramic glaze that provides almost indefinite effectiveness)			
Variant			
♣ White High Gloss, Flush water quantity: 4,5 l		29.000 kg	222659..00
♣ White High Gloss, HygieneGlaze, Flush water quantity: 4,5 l		29.000 kg	222659..00
Sanitary ceramics with the special WonderGliss surface finish will remain clean and attractive-looking for a long time to come. When ordering WonderGliss please add a "1" as eleventh digit to the model number.			
Accessory			
Pre-installation set	135 x 105 mm	0.43 kg	005072
Vario Connector Set	260 x 220 mm	0.385 kg	100730
Vario Connector Set	220 x 260 mm	0.45 kg	100692
Vario Connector Set	220 x 260 mm	0.7 kg	100691
Suitable products			
Shower toilet seat Suitable for series ME by Starck, Starck 2, Starck 3, DuraStyle, Bento Starck Box, White, Automatic close, Seat material type: Duroplast, Lid material type: Duroplast, Adjustable shower jet position level: 5 Steps, Controllable spray jet intensity steps: 3 Steps, Controllable spray jet temperature steps: 4 Steps, Adjustable shower jet position level: 5 Steps, Rearwash, Ladywash, Pulsing shower spray: Oscillating, Remote control, Controller, Self-cleaning shower nozzle/shower head, Decalcification function, Holiday mode, Night light, Protection type: IPX4, 373 x 539 mm			611000

Starck 3 Toilet wall-mounted for shower toilet seat # 222659..00 / 222659..00

| < 365 mm > |

<p>Installation element dry installation for WC Standard 6 l, Powder-coated, Type of installation: In standard lightweight construction, In front of solid wall, Type of mounting: Drywall, Max. projection toilet: 625 mm, Height adjustable: 240 mm, Flush operation: Mechanical, Flush operation position: Front, Adjustable flush volumes, Flush type: Dual Flush, insulated against condensation, Throttle for regulating the flush flow, Self-supporting, Suitable for panelling with plasterboards, 500 x 155 mm</p>	500 x 155 mm	WD1011
<p>Installation element dry installation for WC Odour extraction, Fan activation: Manual, 6 l, Powder-coated, Type of installation: In standard lightweight construction, In front of solid wall, Type of mounting: Drywall, Max. projection toilet: 625 mm, Height adjustable: 240 mm, Flush operation: Mechanical, Flush operation position: Front, Adjustable flush volumes, Flush type: Dual Flush, insulated against condensation, Throttle for regulating the flush flow, Self-supporting, Suitable for panelling with plasterboards, 500 x 155 mm</p>	500 x 155 mm	WD1012
<p>Installation element dry installation for WC Hygienic flush, 6 l, Powder-coated, Type of installation: In standard lightweight construction, In front of solid wall, Type of mounting: Drywall, Max. projection toilet: 625 mm, Height adjustable: 240 mm, Flush operation: Electronic, Flush operation position: Front, Adjustable flush volumes, Flush type: Dual Flush, insulated against condensation, Throttle for regulating the flush flow, Self-supporting, Suitable for panelling with plasterboards, 500 x 155 mm</p>	500 x 155 mm	WD1013
<p>Installation element dry installation for WC Odour extraction, Fan activation: Automatic, Manual, At the touch of a button, Touchless, Hygienic flush, 6 l, Powder-coated, Type of installation: In standard lightweight construction, In front of solid wall, Type of mounting: Drywall, Max. projection toilet: 625 mm, Height adjustable: 240 mm, Flush operation: Electronic, Flush operation position: Front, Adjustable flush volumes, Flush type: Dual Flush, insulated against condensation, Throttle for regulating the flush flow, Self-supporting, Suitable for panelling with plasterboards, 500 x 155 mm</p>	500 x 155 mm	WD1014
<p>Installation element dry installation for WC Standard 6 l, Powder-coated, Type of installation: In standard lightweight construction, In front of solid wall, Type of mounting: Drywall, Max. projection toilet: 625 mm, Height adjustable: 240 mm, Flush operation: Mechanical, Flush operation position: FrontTop, Adjustable flush volumes, Flush type: Dual Flush, insulated against condensation, Throttle for regulating the flush flow, Self-supporting, Suitable for panelling with plasterboards, 500 x 155 mm</p>	500 x 155 mm	WD1016
<p>Installation element dry installation for WC Basic 6 l, Powder-coated, Type of installation: In standard lightweight construction, In front of solid wall, Type of mounting: Drywall, Max. projection toilet: 625 mm, Height adjustable: 240 mm, Flush operation: Mechanical, Flush operation position: FrontTop, Adjustable flush volumes, Flush type: Dual Flush, insulated against condensation, Throttle for regulating the flush flow, Self-supporting, Suitable for panelling with plasterboards, 500 x 155 mm</p>	500 x 155 mm	WD1017

Starck 3 Toilet wall-mounted for shower toilet seat # 222659..00 / 222659..00

| < 365 mm > |

<p>Installation element dry installation for WC Standard 6 l, Powder-coated, Type of installation: In standard lightweight construction, In front of solid wall, Type of mounting: Drywall, Max. projection toilet: 625 mm, Height adjustable: 240 mm, Flush operation: Mechanical, Flush operation position: FrontTop, Adjustable flush volumes, Flush type: Dual Flush, insulated against condensation, Throttle for regulating the flush flow, Self-supporting, Suitable for panelling with plasterboards, 500 x 155 mm</p>	500 x 155 mm	WD1018
<p>Installation element dry installation for WC Basic 6 l, Powder-coated, Type of installation: In standard lightweight construction, In front of solid wall, Type of mounting: Drywall, Max. projection toilet: 625 mm, Height adjustable: 240 mm, Flush operation: Mechanical, Flush operation position: FrontTop, Adjustable flush volumes, Flush type: Dual Flush, insulated against condensation, Throttle for regulating the flush flow, Self-supporting, Suitable for panelling with plasterboards, 500 x 155 mm</p>	500 x 155 mm	WD1019
<p>Installation element dry installation for WC Basic 6 l, Powder-coated, Type of installation: In standard lightweight construction, In front of solid wall, Type of mounting: Drywall, Max. projection toilet: 625 mm, Height adjustable: 240 mm, Flush operation: Mechanical, Flush operation position: Front, Adjustable flush volumes, Flush type: Dual Flush, insulated against condensation, Throttle for regulating the flush flow, Self-supporting, Suitable for panelling with plasterboards, 500 x 155 mm</p>	500 x 155 mm	WD1020
<p>Shower toilet seat Suitable for series ME by Starck, Starck 2, Starck 3, Darling New, Bento Starck Box, Automatic close, Adjustable shower jet position level: 5 Steps, Controllable spray jet intensity steps: 3 Steps, Controllable spray jet temperature steps: 4 Steps, Adjustable shower jet position level: 5 Steps, Rearwash, Ladywash, Pulsing shower spray: Oscillating, Number of programmable user profiles: 4, Self-cleaning shower nozzle/shower head, Decalcification function, Energy saving mode: Adjustable, Night light, 365 x 520 mm</p>	365 x 520 mm	613000

All drawings contain the necessary measurements which are subject to standard tolerances. They are stated in mm and are non-binding. Exact measurements, in particular for customised installation scenarios, can only be taken from the finished piece.