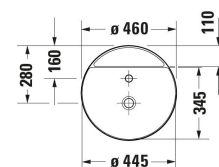
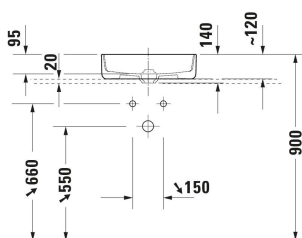
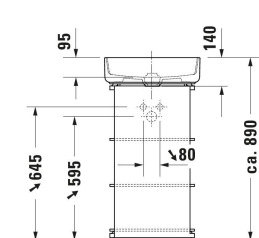


Bento Starck Box Washbowl # 238046..41 / 238046..71 / 238046..41 / 238046..71

| < Ø 460 mm > |



Washbowl	Dimension	Weight	Order number
DuraCeram®, Round, Tap hole platform: No, Incl. slotted waste, 460 mm			
Colors			
20 HygieneGlaze (an antibacterial ceramic glaze that provides almost indefinite effectiveness) 30 White Satin Matt			
Variant			
● White High Gloss, HygieneGlaze, Number of washing areas: 1, Number of faucet holes per wash area: 1 Middle, Overflow: No		10.100 kg	238046..41
● White High Gloss, HygieneGlaze, Number of washing areas: 1, Number of faucet holes per wash area: 1 Middle, Overflow: No, grounded		10.100 kg	238046..71
● White Satin Matt, HygieneGlaze, Number of washing areas: 1, Number of faucet holes per wash area: 1 Middle, Overflow: No		10.100 kg	238046..41
● White Satin Matt, HygieneGlaze, Number of washing areas: 1, Number of faucet holes per wash area: 1 Middle, Overflow: No, grounded		10.100 kg	238046..71
Infobox			
Washbasin has to be installed with Duravit furniture			
Accessory			
Design siphon Brass, Outlet drain: horizontal, Suitable for Washbasin	70 x 425 mm	1.5 kg	005036
Recommended faucets			
single lever basin mixer L Ceramic cartridge, Height: 262 mm, Spout reach: 136 mm, Connection type for water supply connection: Flexible connecting hoses, Dimension of connection hose: 3/8", Spray mode: Normal spray, Aerator adjustable, recommended operating pressure: 1 - 5 bar, Noise class: I, 166 x 40 mm	166 x 40 mm		C11030002

Bento Starck Box Washbowl # 238046..41 / 238046..71 / 238046..41 / 238046..71

| < Ø 460 mm > |

single lever basin mixer L Chrome, Ceramic cartridge, Height: 280 mm, Spout reach: 140 mm, Connection type for water supply connection: Flexible connecting hoses, Dimension of connection hose: 3/8", Spray mode: Normal spray, Aerator adjustable, Temperature limit adjustable, recommended operating pressure: 1 - 5 bar, 48 x 175 mm	48 x 175 mm	WT1030002
single lever basin mixer XL Ceramic cartridge, Height: 265 mm, Spout reach: 155 mm, Connection type for water supply connection: Flexible connecting hoses, Dimension of connection hose: 3/8", Spray mode: Normal spray, Aerator, Temperature limit adjustable, recommended operating pressure: 1 - 5 bar, Unified Water Label (UWL) Class: 1, 50 x 200 mm	50 x 200 mm	TU1040002

All drawings contain the necessary measurements which are subject to standard tolerances. They are stated in mm and are non-binding. Exact measurements, in particular for customised installation scenarios, can only be taken from the finished piece.