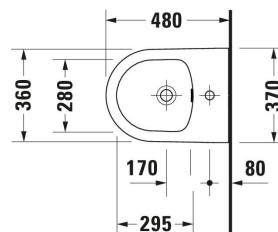
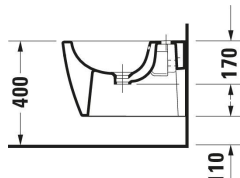
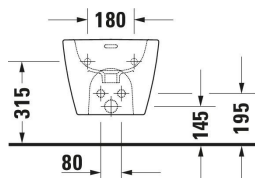


## Soleil by Starck Wall-mounted bidet Compact # 2298150000

| < 370 mm > |



Wall-mounted bidet Compact	Dimension	Weight	Order number
Tap hole platform: Yes, Incl. invisible fixation, Incl. mounting material			
<b>Colors</b>			
00 White Alpin			
<b>Variant</b>			
White High Gloss, Number of faucet holes per wash area: 1, Overflow: Yes		18.200 kg	2298150000
Sanitary ceramics with the special WonderGliss surface finish will remain clean and attractive-looking for a long time to come. When ordering WonderGliss please add a "1" as eleventh digit to the model number.			
<b>Accessory</b>			
Mounting Suitable for Wall-mounted bidet, Wall-mounted toilet Ø 12 mm		0.28 kg	006500
<b>Suitable products</b>			
Single lever bidet mixer Chrome, Height: 129 mm, Spout reach: 127 mm, Ceramic cartridge, Connection type for water supply connection: Flexible connecting hoses, Dimension of connection hose: 3/8", Spray mode: Normal spray, Aerator with ball joint, Temperature limit adjustable, recommended operating pressure: 1 - 5 bar, with pop-up waste set, 148 x 42 mm		148 x 42 mm	B12400001
Single lever bidet mixer Chrome, Height: 156 mm, Spout reach: 123 mm, Ceramic cartridge, Connection type for water supply connection: Flexible connecting hoses, Dimension of connection hose: 3/8", Spray mode: Normal spray, Aerator with ball joint, recommended operating pressure: 1 - 5 bar, with pop-up waste set, 50 x 148 mm		50 x 148 mm	N12400001
Single lever bidet mixer Ceramic cartridge, Connection type for water supply connection: Flexible connecting hoses, Dimension of connection hose: 3/8", Spray mode: Normal spray, Aerator with ball joint, recommended operating pressure: 1 - 5 bar, with pop-up waste set, 52 x 152 mm		52 x 152 mm	WA2400001

All drawings contain the necessary measurements which are subject to standard tolerances. They are stated in mm and are non-binding. Exact measurements, in particular for customised installation scenarios, can only be taken from the finished piece.