

# Wave, Circle

---

**Instructions for mounting and use**

安装和操作说明

**Shower System**

淋浴系统

# CE4280 007C, # CE5280 007C, # CE5280 008C, # WA4280 007C, # WA4280 008C,  
# WA5280 006C, # WA5280 007C, # WA5280 008C







These instructions are part of the Duravit product and must be read carefully and kept available at all times.

### Target readership and qualifications

The product may only be installed by a qualified plumber.

### Explanation of the key words and symbols

#### NOTICE

Addresses practices not related to physical injury.



Link to the mounting instructions in this section



Prompt for inspection  
(e.g. for scratches)



Prompt to wear  
gloves

### Technical data

Operating pressure	max. 1.0 MPa
Recommended	0.1 - 0.5 MPa
Test pressure	1.6 MPa
1 MPa = 10 bar = 145 PSI	
Hot water temperature	max. 60 °C

### Safety instructions

#### Cut and crushing injuries

- > Wear gloves when installing the product.

#### Product and/or property damage

- > Observe the local installation regulations and any country-specific standards at all times.
- > Equalise pressure differences between cold and hot water connections.
- > Observe the manufacturer's instructions for installation with continuous flow heaters.

### Mounting instructions

#### 1 Flushing and siliconising (diagram 01)

#### NOTICE

#### Tap unit malfunction due to dirty pipes

- > Flush the pipes according to the applicable standards before mounting the tap unit.

#### Water damage

- > Enclose pipes with silicone that does not contain acetic acid.



该说明是 Duravit 产品的组成部分，必须仔细阅读并随时可用。

目标群体及资质

产品只能由经过培训的水暖工安装。

信息词及符号的解释

公告

描述未涉及人员的损害。



请参阅本章中的安装说明



要求目视检查（例如：检查划痕）



要求戴手套

技术数据

使用压力	最大 1.0 MPa
建议	0.1 - 0.5 MPa
检测压力	1.6 MPa
1 MPa = 10 bar = 145 PSI	
热水温度	最高 60 °C

安全提示

切割和挤压伤

- > 安装时佩戴手套。
- 产品和/或财产损失
- > 遵守当地安装规定及相关国家标准。
  - > 补偿热水管和冷水管之间的压力差。
  - > 安装连续直通式热水器，请遵循制造商说明。

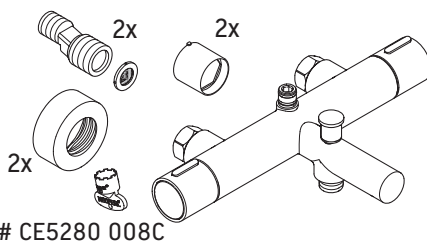
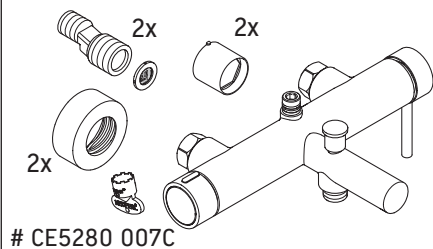
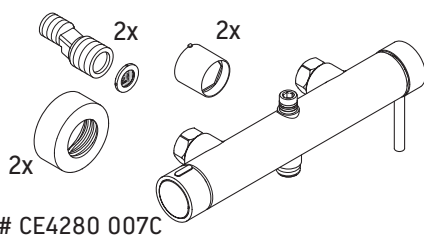
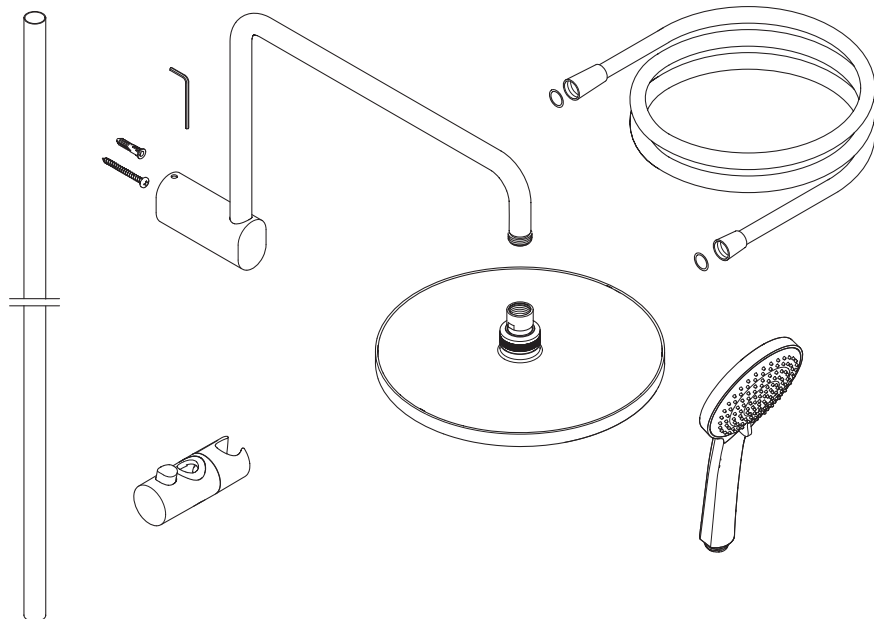
安装提示

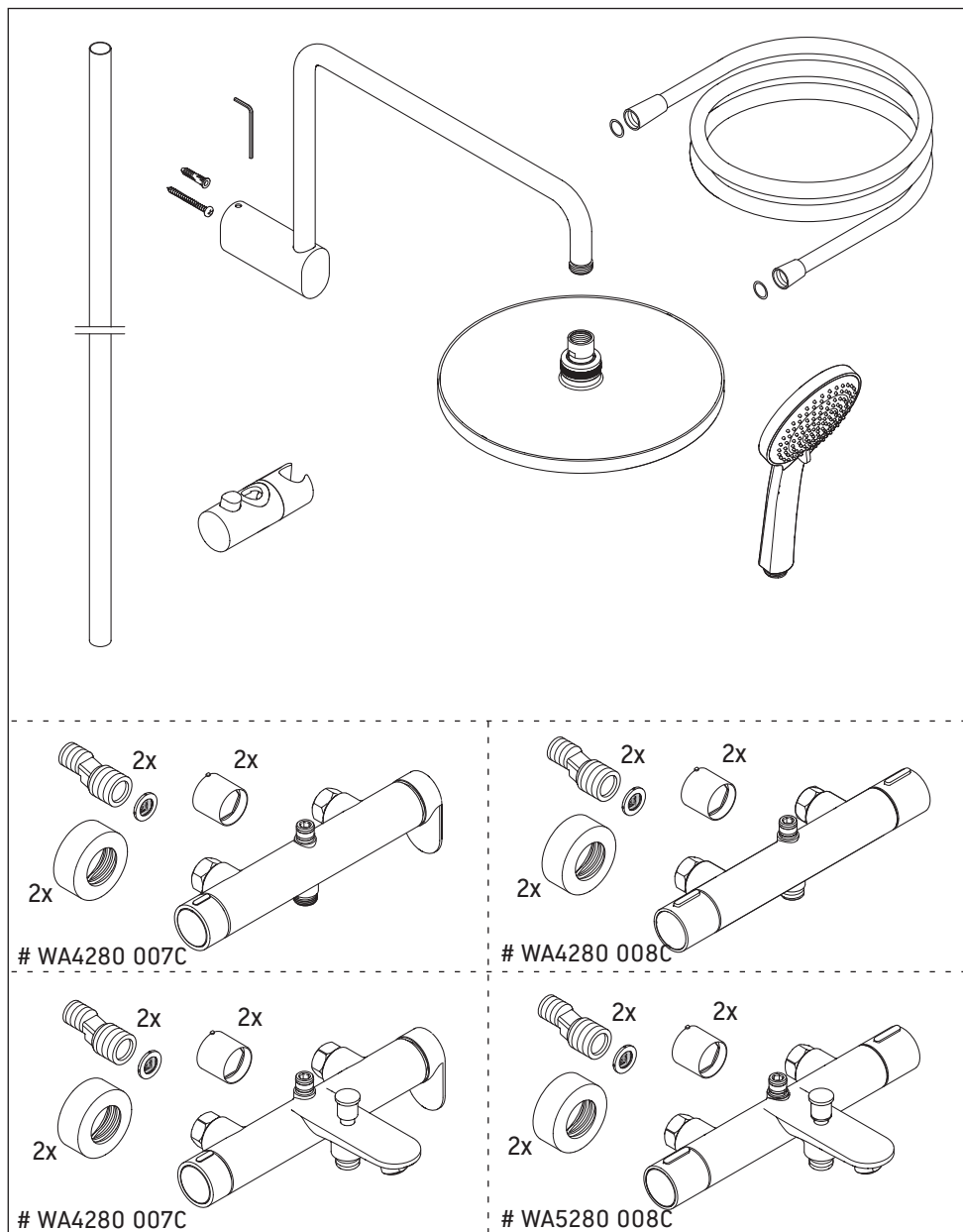
1 清洗和密封处理（图表 01）

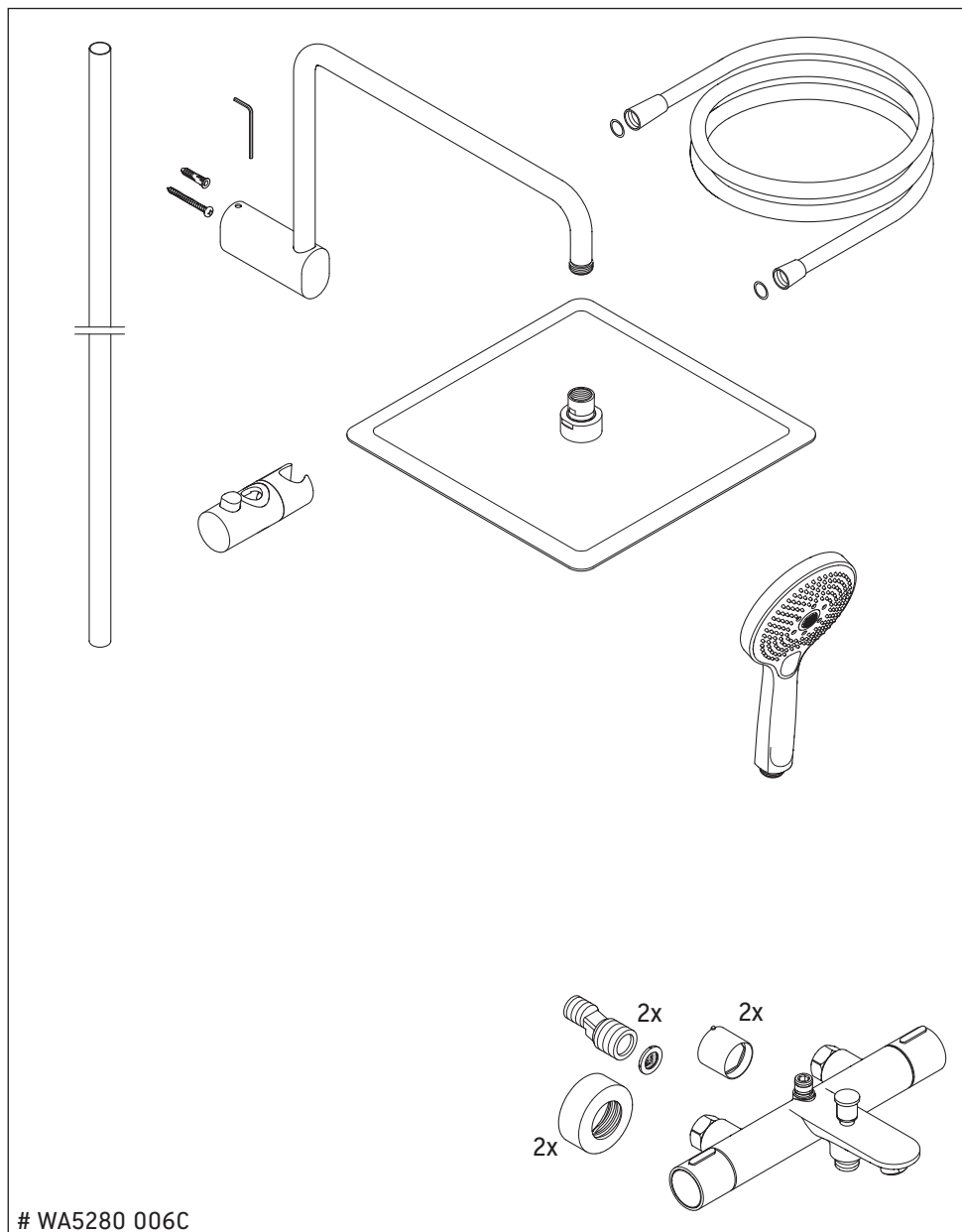
公告

管道脏导致的龙头故障

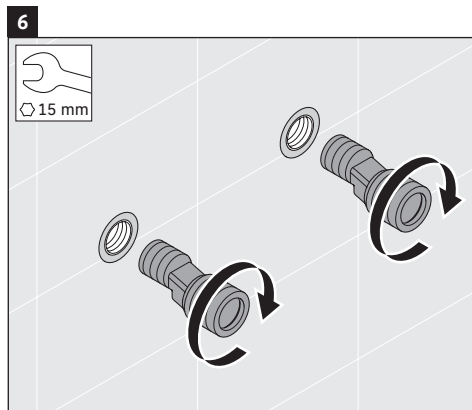
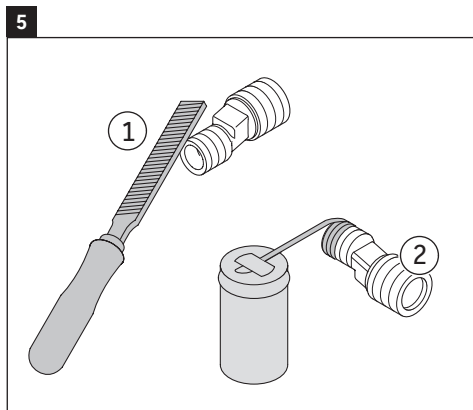
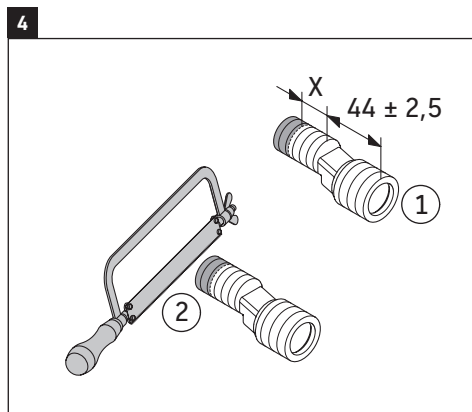
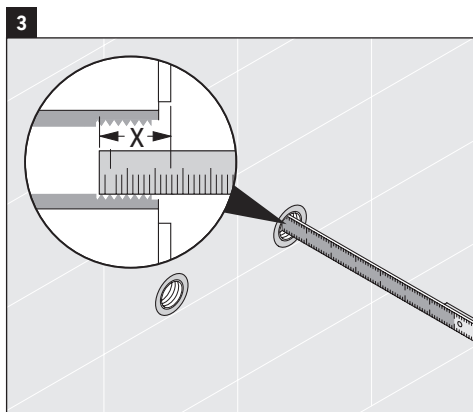
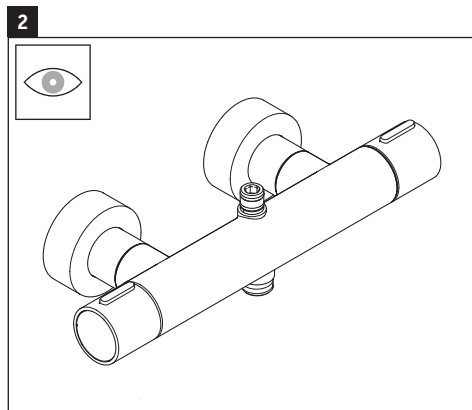
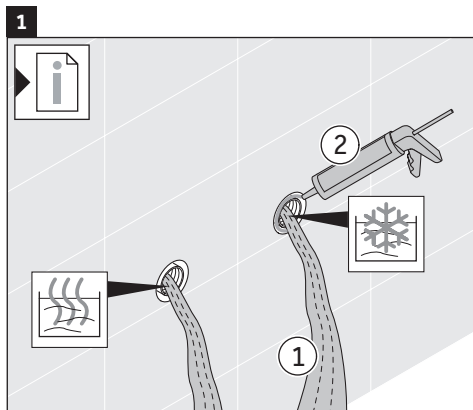
- > 安装龙头管道前，应按相关标准进行清洁。
- 水损坏
- > 使用不含乙酸的硅树脂密封管道。

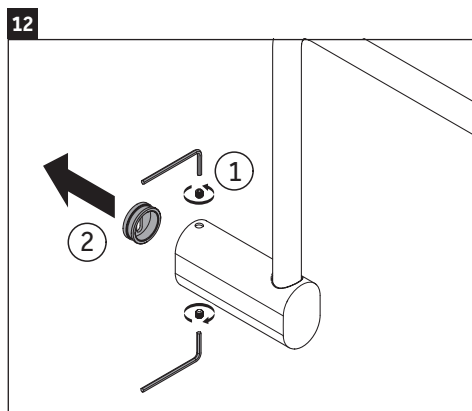
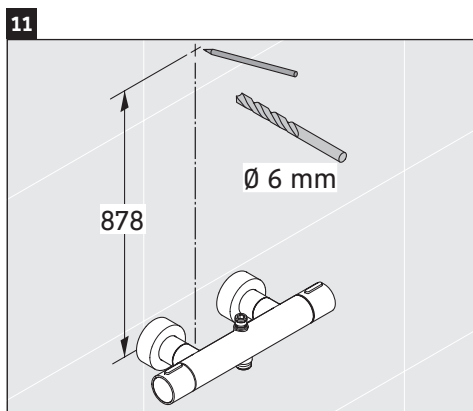
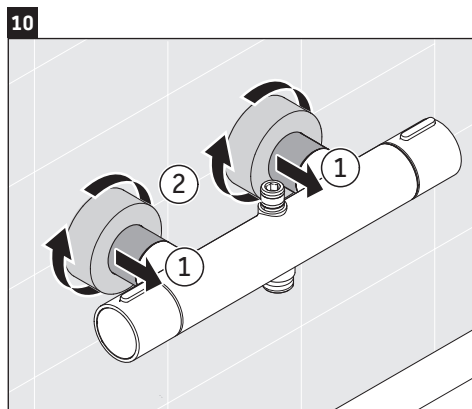
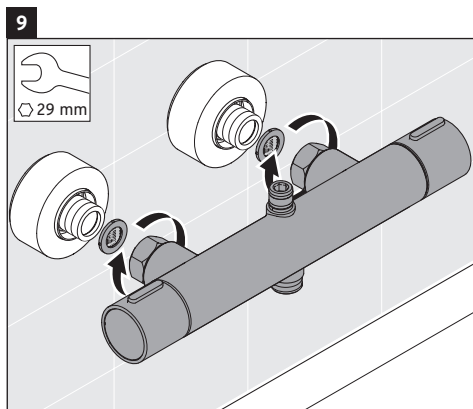
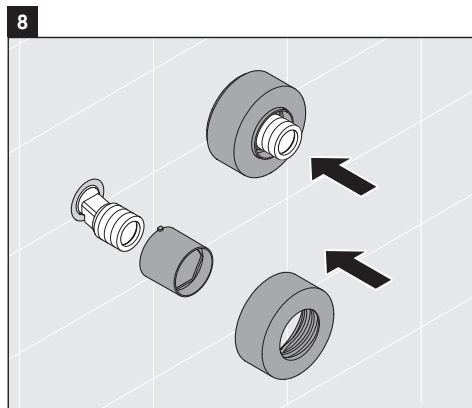
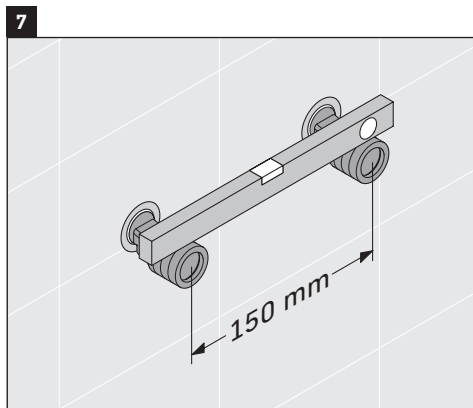


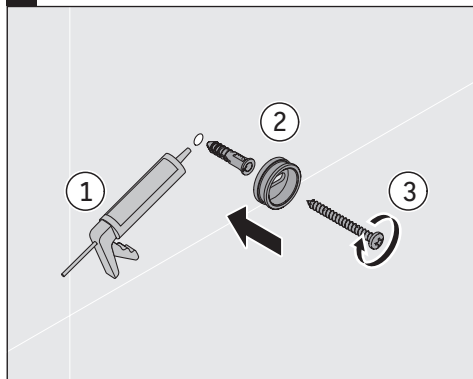
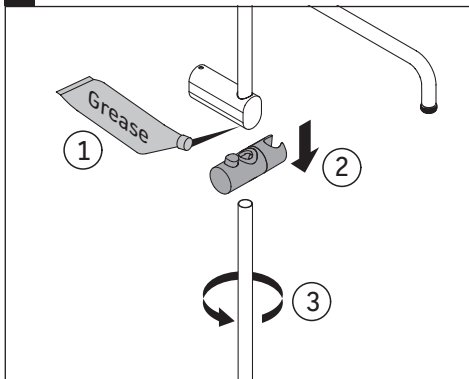
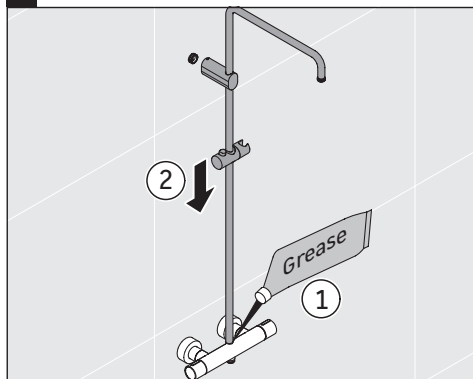
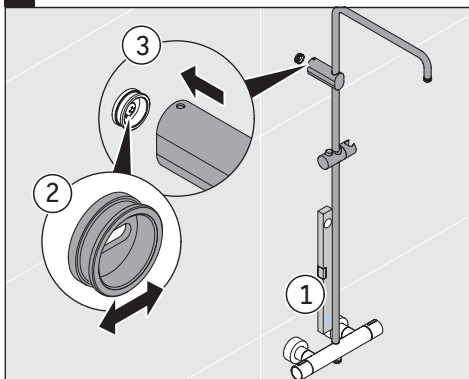
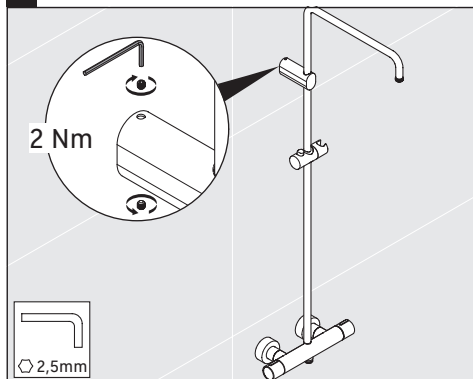
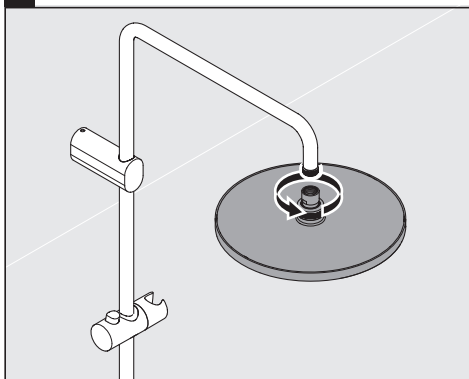




# WA5280 006C

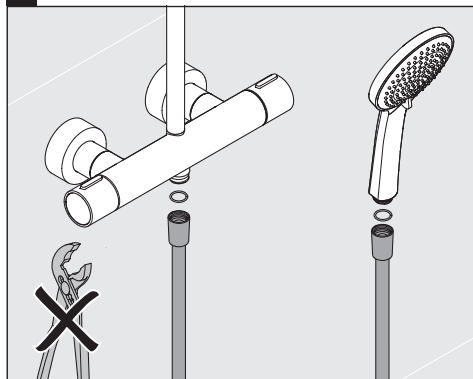




**13****14****15****16****17****18**

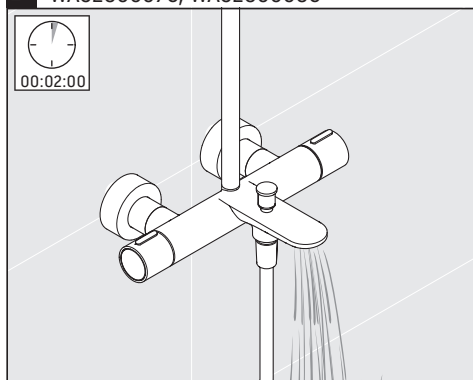


19



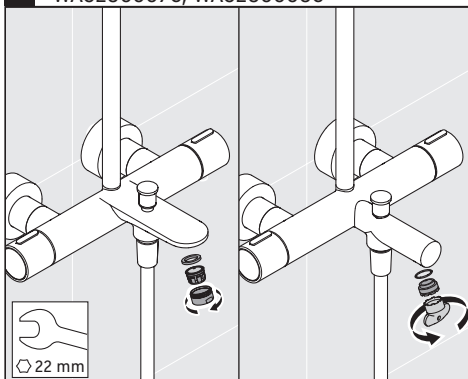
CE5280007C, CE5280008C, WA5280006C,  
WA5280007C, WA5280008C

21



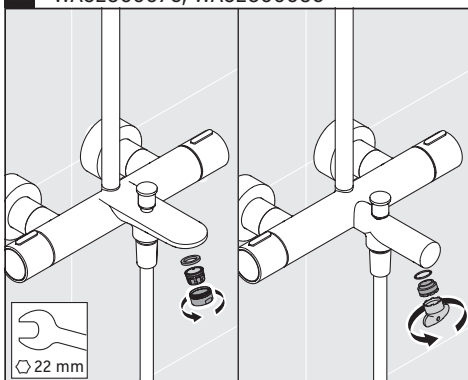
20

CE5280007C, CE5280008C, WA5280006C,  
WA5280007C, WA5280008C



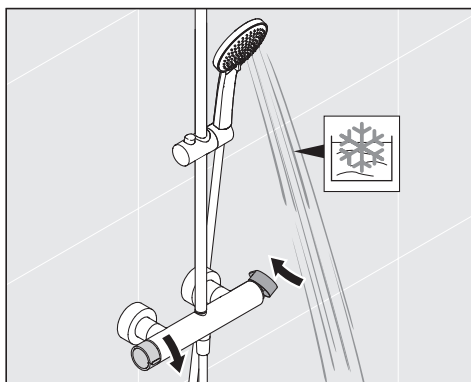
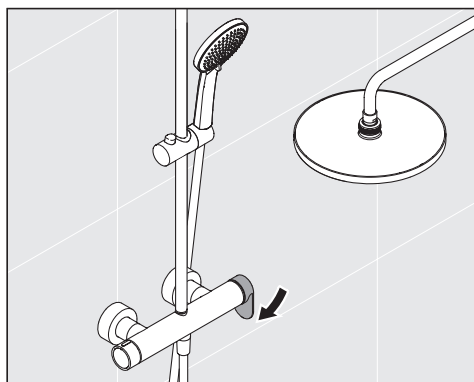
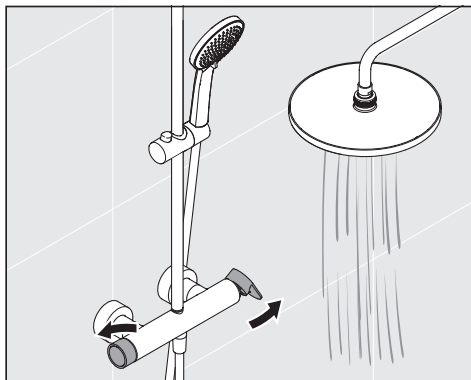
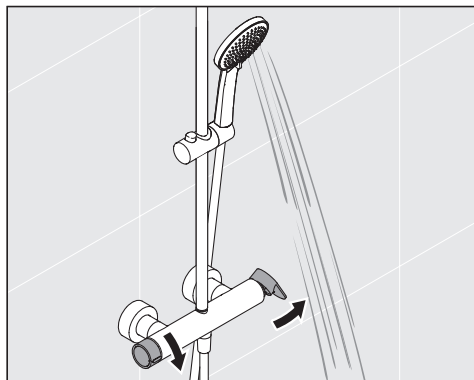
22

CE5280007C, CE5280008C, WA5280006C,  
WA5280007C, WA5280008C

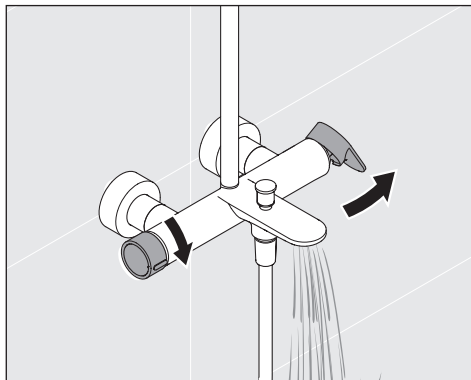
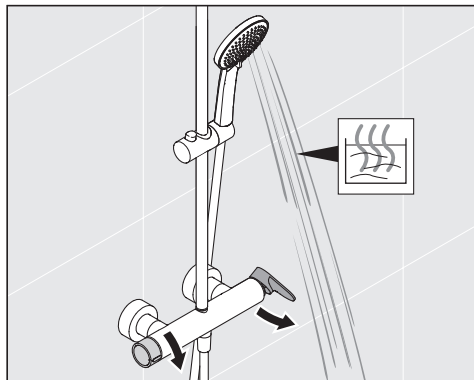




# CE4280 007C, # CE5280 007C, # WA4280 007C, # WA5280 007C

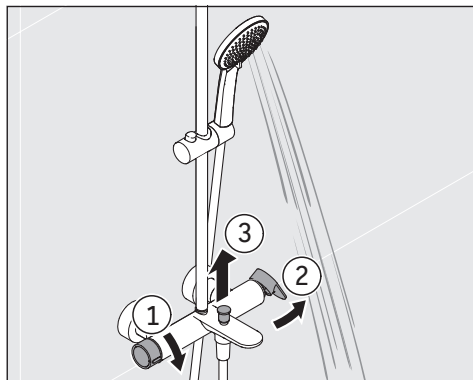


# CE5280 007C, # WA5280 007C

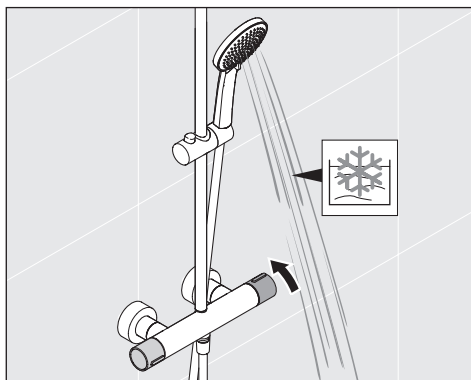
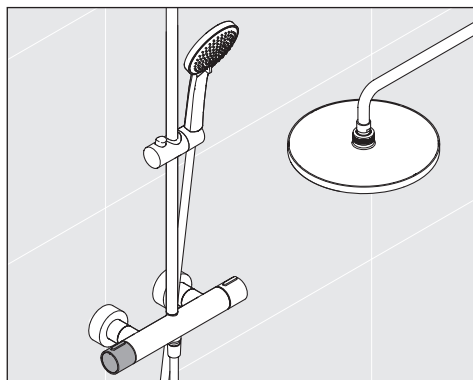
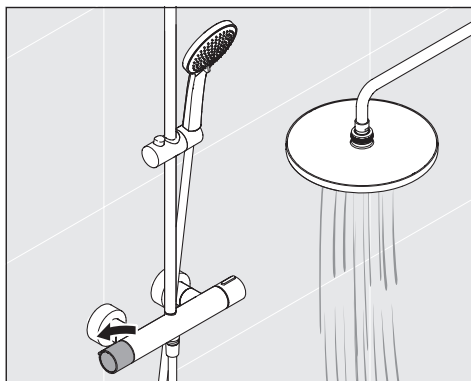
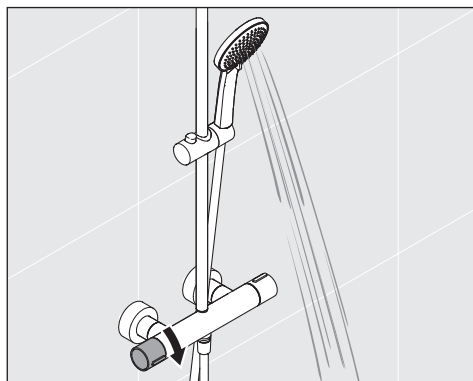




# CE5280 007C, # WA5280 007C

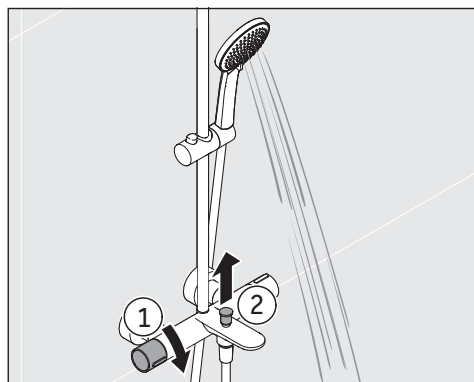
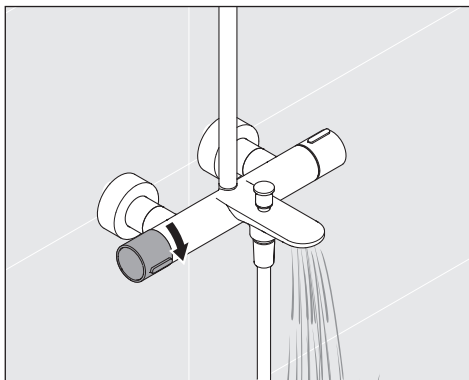
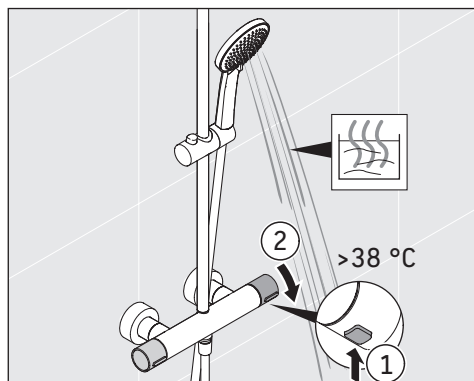


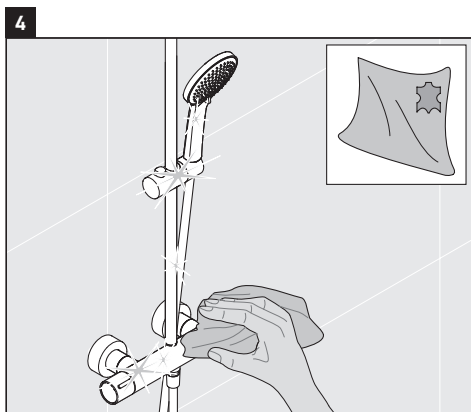
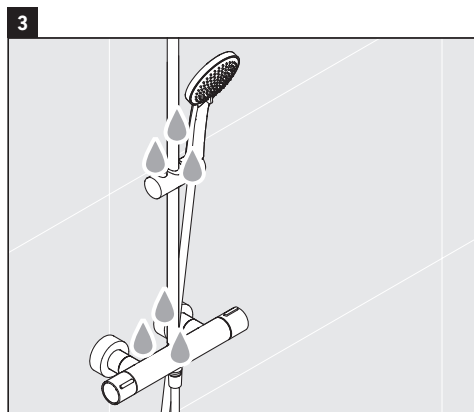
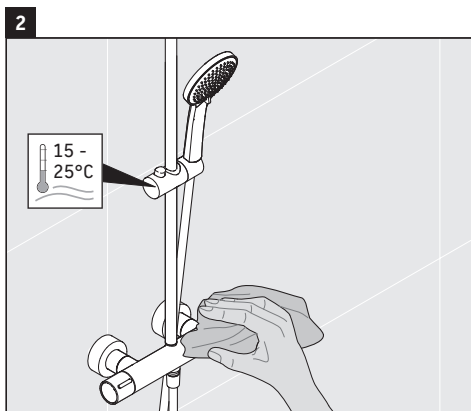
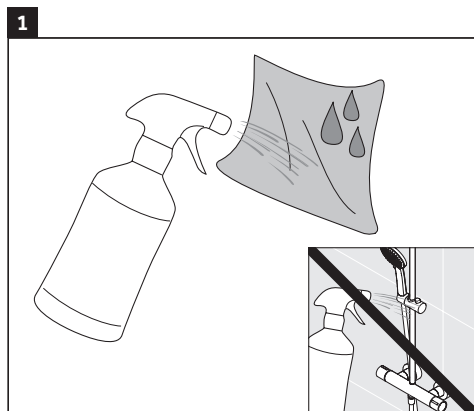
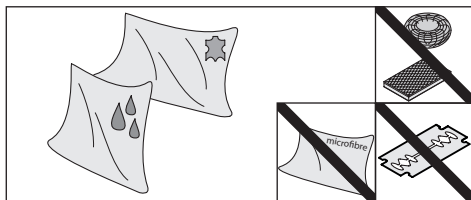
# CE5280 008C, # WA4280 008C, # WA5280 006C, # WA5280 008C





# CE5280 008C, # WA5280 006C, # WA5280 008C





**DURAVIT AG**  
P.O. Box 240  
Werderstr. 36  
78132 Hornberg  
Germany  
Phone +49 78 33 70 0  
Fax +49 78 33 70 289  
info@duravit.com  
www.duravit.com

杜拉维特（中国）洁具有限公司  
重庆市江津区珞璜工业园B区园区大道88号  
客服电话 + 86 400 105 1055  
周一至周五 9:00-12:00; 13:00-17:00  
info@cn.duravit.com  
www.duravit.cn

