

Wave, Circle

Instructions for mounting and use

安装和操作说明

3-hole basin mixer

三孔脸盆龙头





These instructions are part of the Duravit product and must be read carefully and kept available at all times.

Target readership and qualifications

The product may only be installed by a qualified plumber.

Explanation of the key words and symbols

NOTICE

Addresses practices not related to physical injury.



Link to the mounting instructions in this section



Prompt for inspection (e.g. for scratches)



Prompt to inspect for leaks and leak-tightness



Prompt to wear gloves

Technical data

Operating pressure	max. 1.0 MPa
Recommended	0.1 - 0.5 MPa
Test pressure	1.6 MPa
1 MPa = 10 bar = 145 PSI	
Hot water temperature	max. 60 °C

Safety instructions

Cut and crushing injuries

- > Wear gloves when installing the product.

Product and/or property damage

- > Observe the local installation regulations and any country-specific standards at all times.
- > Equalise pressure differences between cold and hot water connections.
- > Observe the manufacturer's instructions for installation with continuous flow heaters.

Mounting instructions

1 Flushing and siliconising (diagram 01)

NOTICE

Tap unit malfunction due to dirty pipes

- > Flush the pipes according to the applicable standards before mounting the tap unit.

Water damage

- > Enclose pipes with silicone that does not contain acetic acid.



该说明是 Duravit 产品的组成部分，必须仔细阅读并随时可用。

目标群体及资质

产品只能由经过培训的水暖工安装。

信息词及符号的解释

公告

描述未涉及人员的损害。



请参阅本章中的安装说明



要求目视检查（例如：检查划痕）



要求检查密闭性



要求戴手套

技术数据

使用压力	最大 1.0 MPa
建议	0.1 - 0.5 MPa
检测压力	1.6 MPa
1 MPa = 10 bar = 145 PSI	
热水温度	最高 60 °C

安全提示

切割和挤压伤

- 安装时佩戴手套。
- ##### 产品和/或财产损失
- 遵守当地安装规定及相关国家标准。
 - 补偿热水管和冷水管之间的压力差。
 - 安装连续直通式热水器，请遵循制造商说明。

安装提示

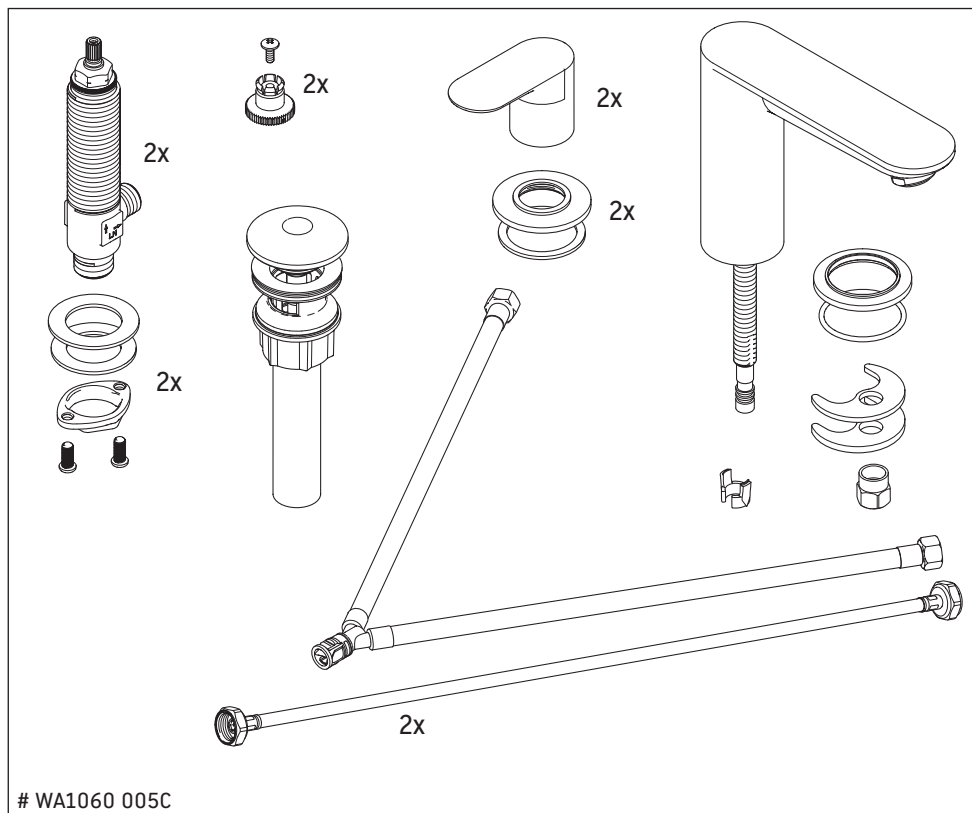
1 清洗和密封处理（图表 01）

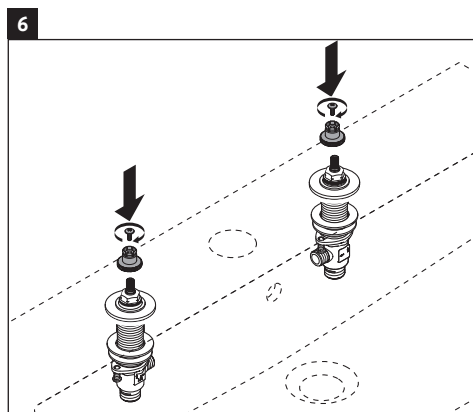
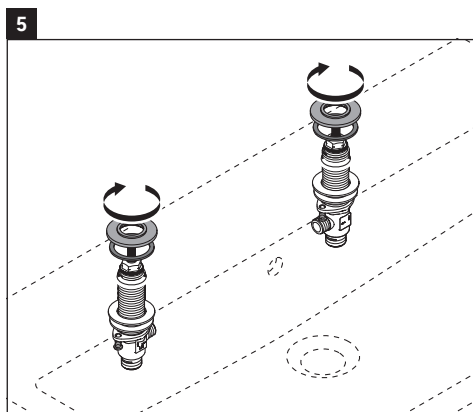
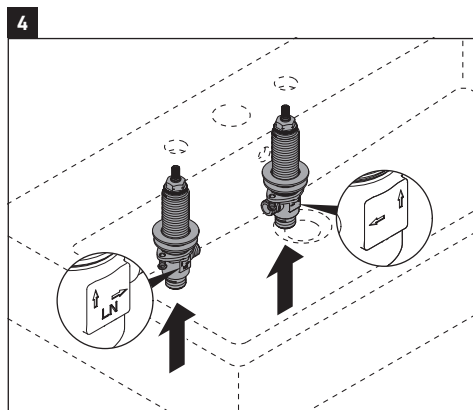
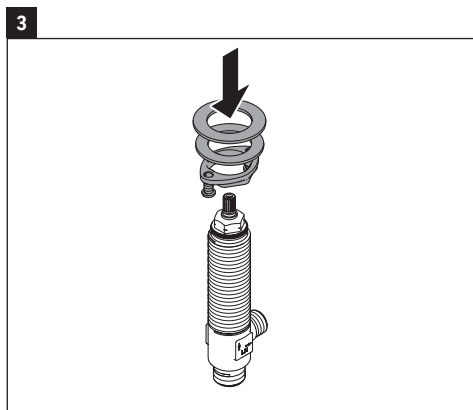
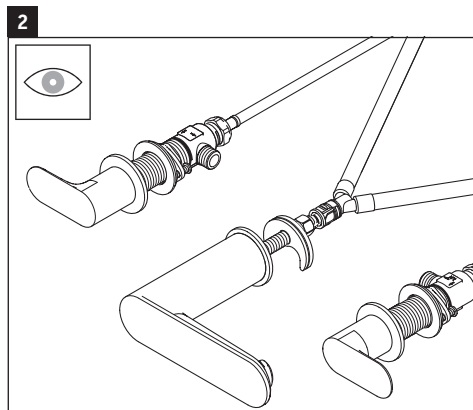
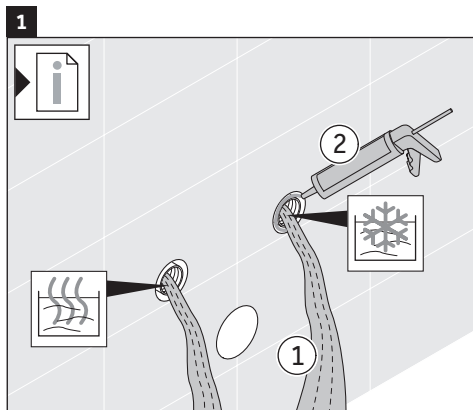
公告

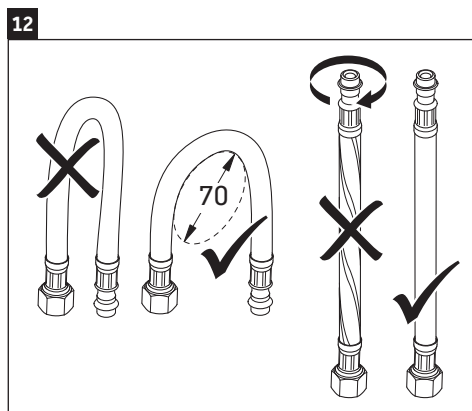
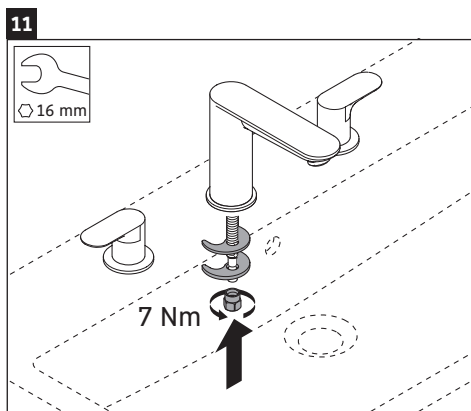
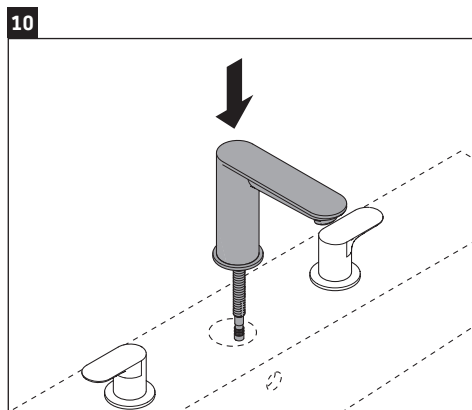
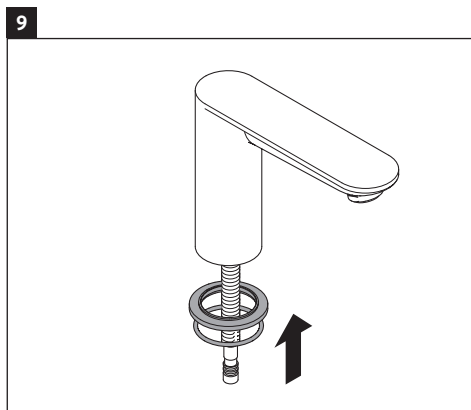
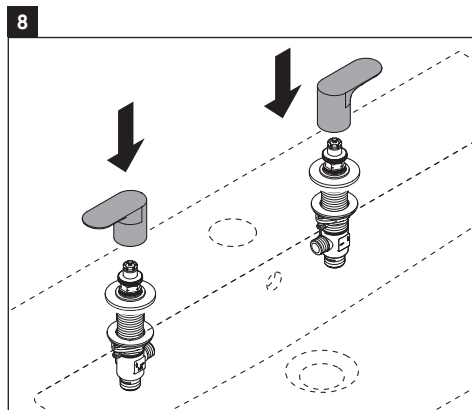
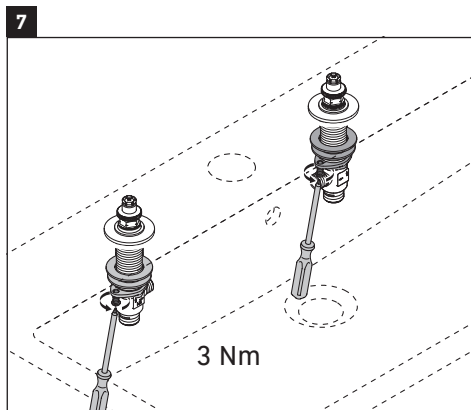
管道脏导致的龙头故障

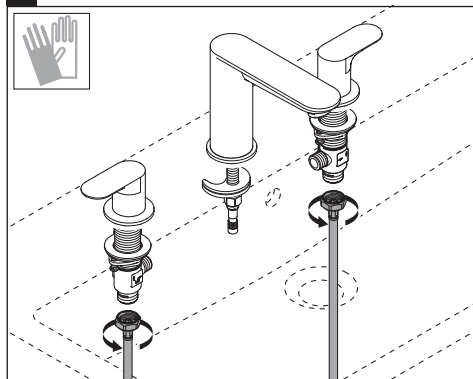
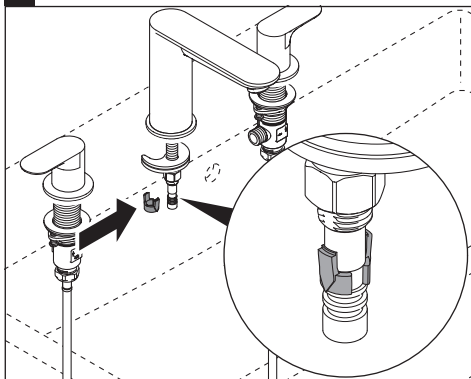
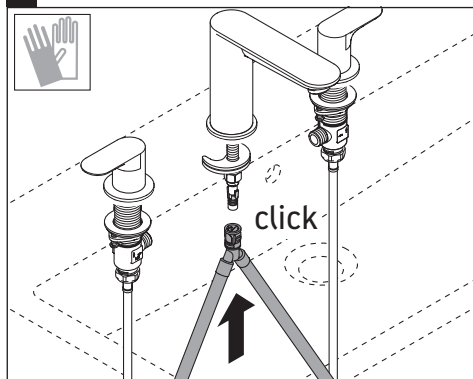
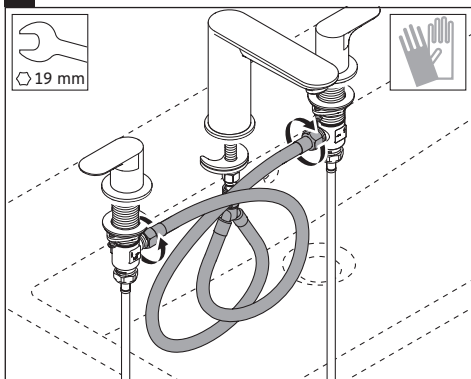
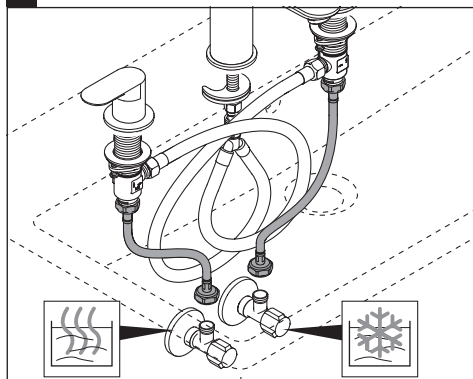
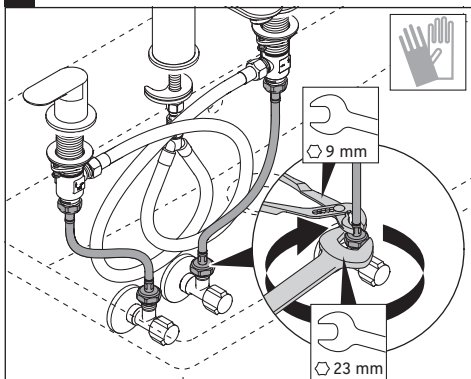
- 安装龙头管道前，应按相关标准进行清洁。
- ##### 水损坏
- 使用不含乙酸的硅树脂密封管道。

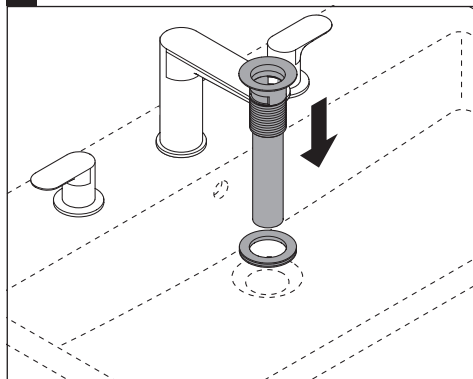
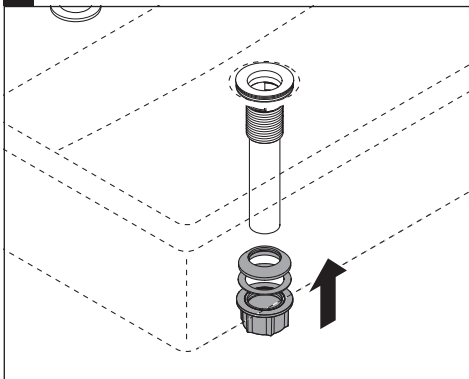
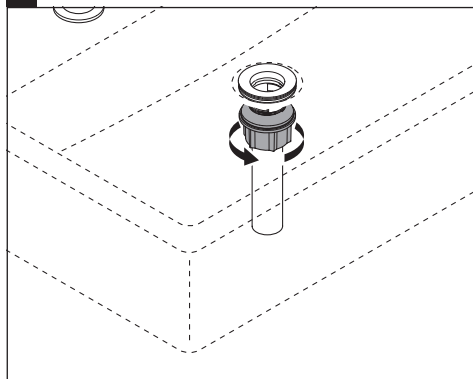
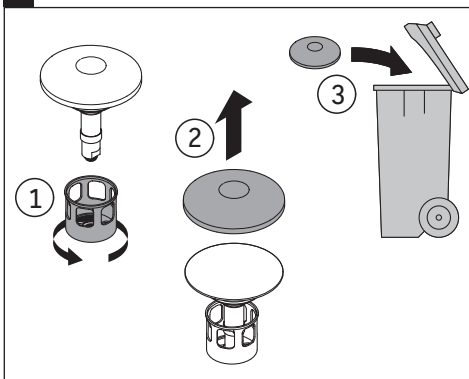
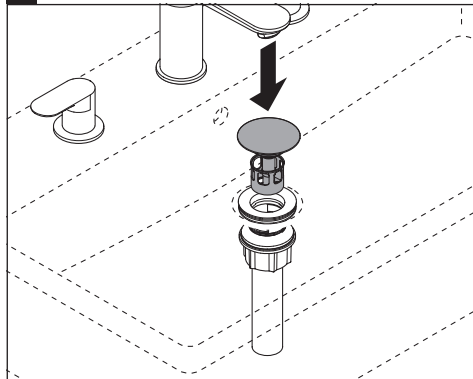
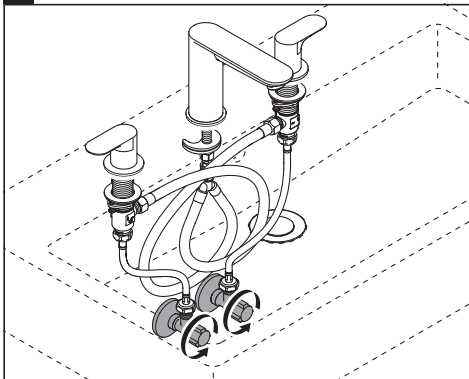


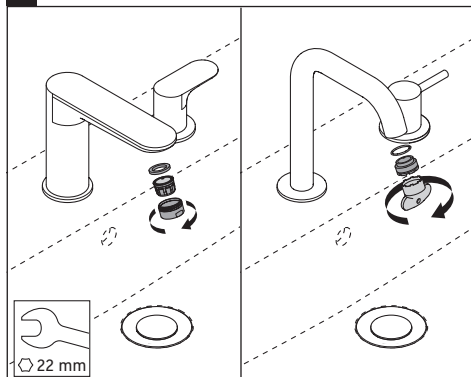
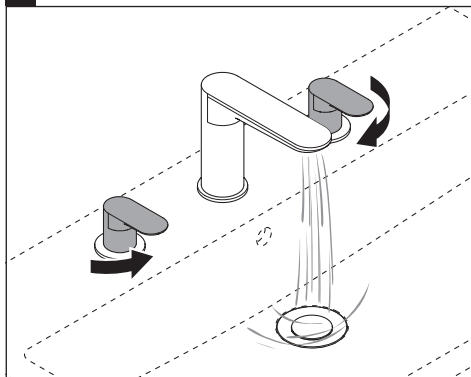
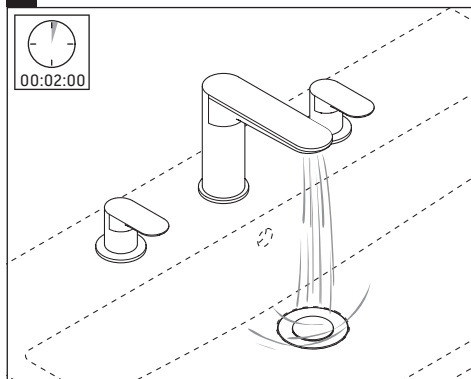
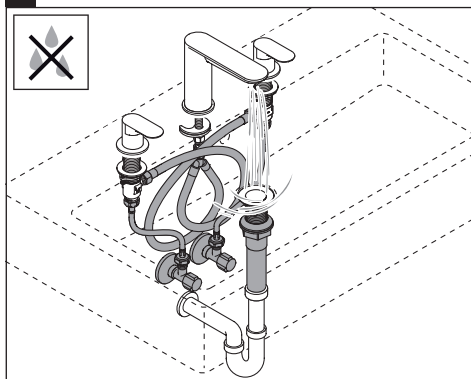
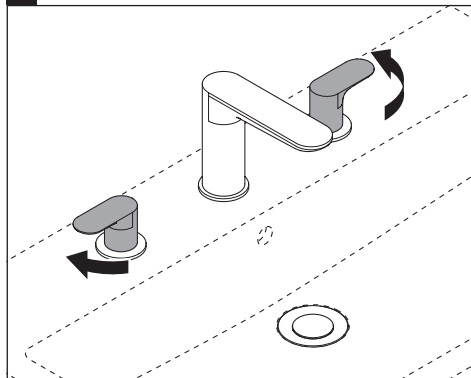
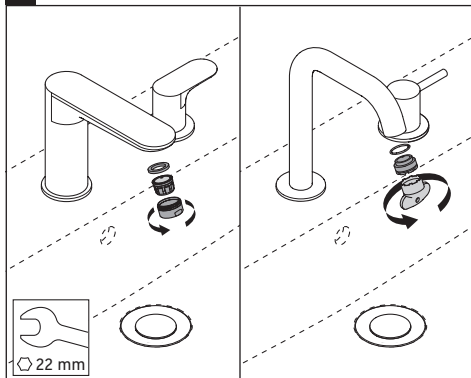


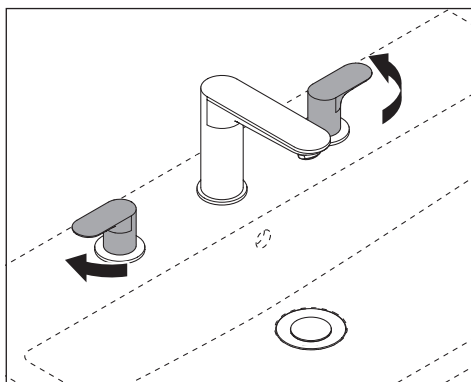
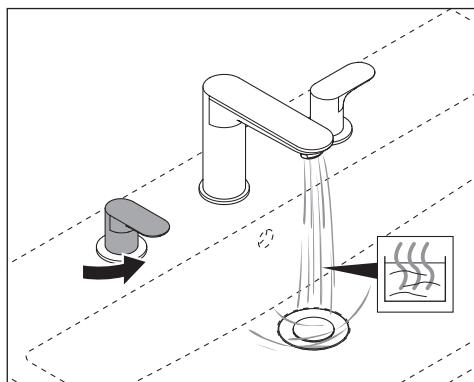
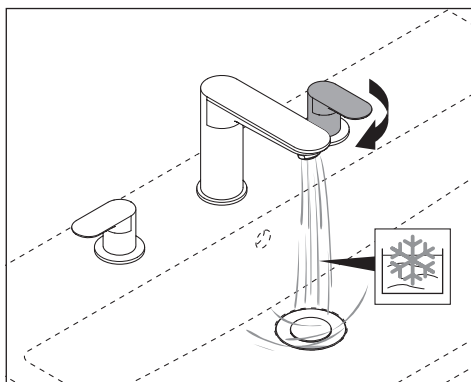
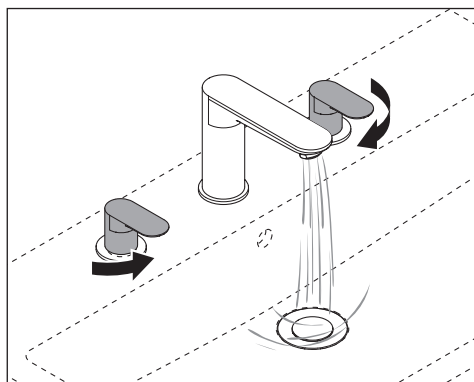


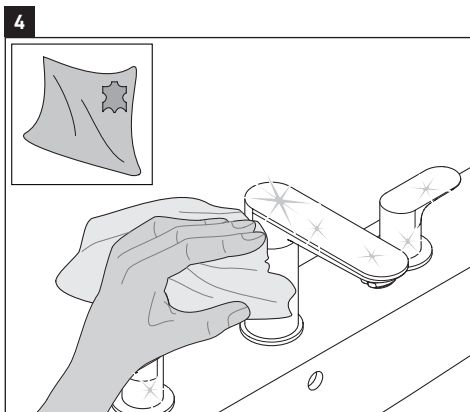
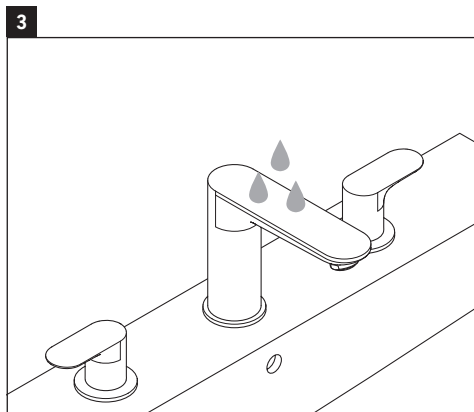
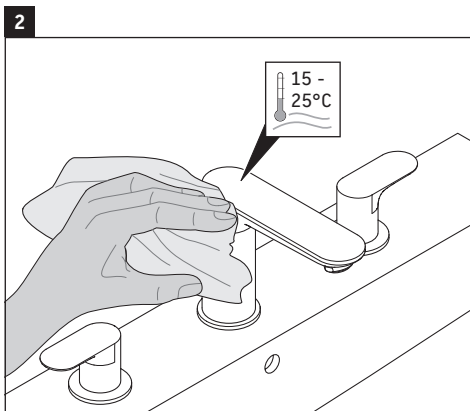
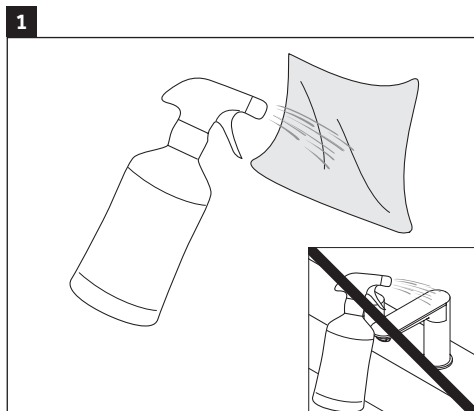
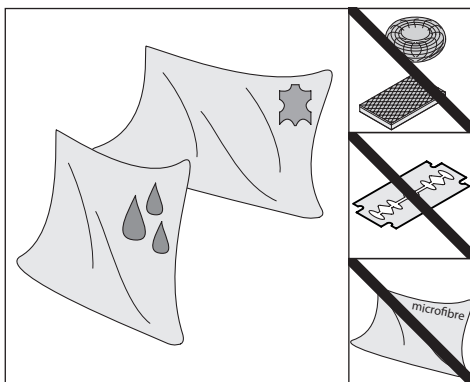


**13****14****15****16****17****18**

**19****20****21****22****23****24**

**25****26****27****28****29****30**





DURAVIT AG
P.O. Box 240
Werderstr. 36
78132 Hornberg
Germany
Phone +49 78 33 70 0
Fax +49 78 33 70 289
info@duravit.com
www.duravit.com

杜拉维特（中国）洁具有限公司
重庆市江津区珞璜工业园B区园区大道88号
客服电话 + 86 400 105 1055
周一至周五 9:00-12:00; 13:00-17:00
info@cn.duravit.com
www.duravit.cn

