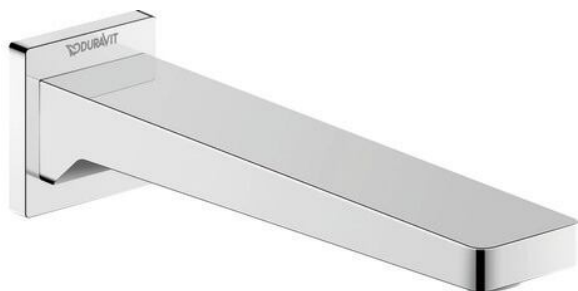


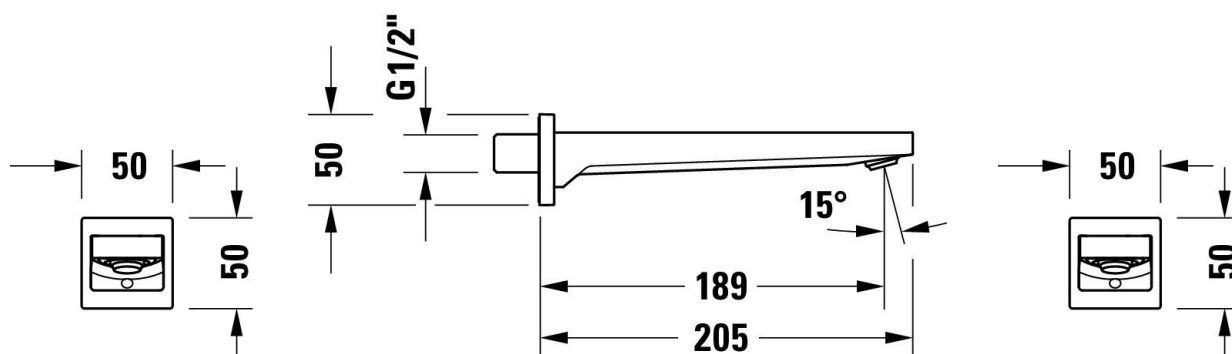
Manhattan Bath spout # MH52400100.. / MH52400100.. / MH5240010C.. / MH5240010C..

| < 50 mm > |



Bath spout	Dimension	Weight	Order number
Escutcheon shape: Square, Dimensions of water supply connection: DN 15			
Colors			
10 Chrome 46 Black Matt			
Variant			
Chrome, Spout reach: 189 mm, Flow rate (3 bar): 19,5 l/min		0.710 kg	MH52400100..
Black Matt, Spout reach: 189 mm, Flow rate (3 bar): 19,5 l/min		0.710 kg	MH52400100..
Chrome		0.710 kg	MH5240010C..
Black Matt		0.710 kg	MH5240010C..
Suitable accessories for Chrome, Spout reach: 189 mm, Flow rate (3 bar): 19,5 l/min, Black Matt, Spout reach: 189 mm, Flow rate (3 bar): 19,5 l/min			
Single lever bathtub mixer for concealed installation Number of outlets: 2, Connection type for water supply connection: Basic Set, Ceramic cartridge, Consumer selection: Tub filler, Hand shower, Outlet/Diverter: Diverter valve, Number of outlets: 2, recommended operating pressure: 1 - 5 bar, Escutcheon shape: Square, Including functional unit, Including trim parts		150 x 82 mm 2.2 kg	MH5210012

All drawings contain the necessary measurements which are subject to standard tolerances. They are stated in mm and are non-binding. Exact measurements, in particular for customised installation scenarios, can only be taken from the finished piece.



Manhattan Bath spout # MH52400100.. / MH52400100.. /
MH5240010C.. / MH5240010C..

|< 50 mm >|

