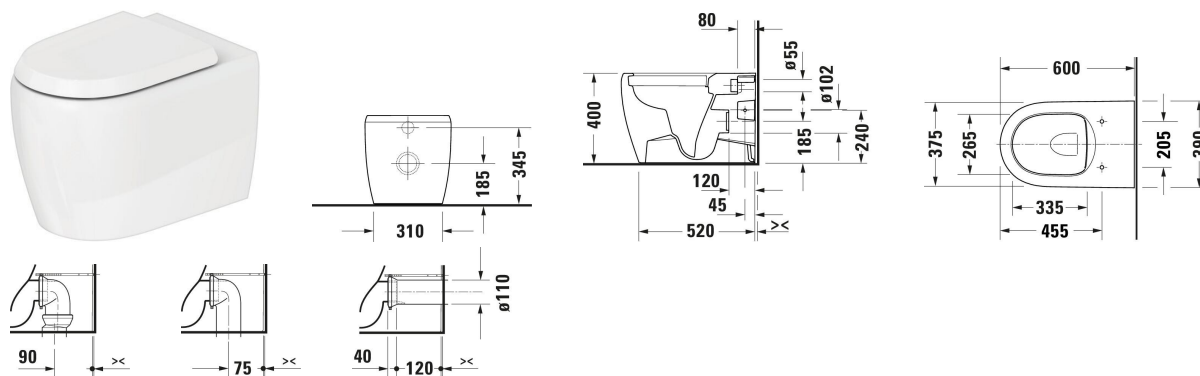


Gatego Floorstanding toilet # 202009..00 / 202009..00

| < 390 mm > |



Floorstanding toilet	Dimension	Weight	Order number
Back to wall version, Flush water quantity: 4,5/3 l, Washdown model, Flushing rim: Rimless, Outlet drain: horizontal, Flush principle: washdown model, Incl. invisible fixation, Incl. mounting material, Unified Water Label (UWL) Class: 1			
Colors			
00 White Alpin 20 HygieneGlaze (an antibacterial ceramic glaze that provides almost indefinite effectiveness)			
Variant			
◆ White High Gloss		33.000 kg	202009..00
◆ White High Gloss, HygieneGlaze		33.000 kg	202009..00
Suitable products			
Toilet seat Shape: D-shaped, Hinge material: Stainless steel, Hinge colour: Light grey, 463 x 369 mm	463 x 369 mm		002689

All drawings contain the necessary measurements which are subject to standard tolerances. They are stated in mm and are non-binding. Exact measurements, in particular for customised installation scenarios, can only be taken from the finished piece.