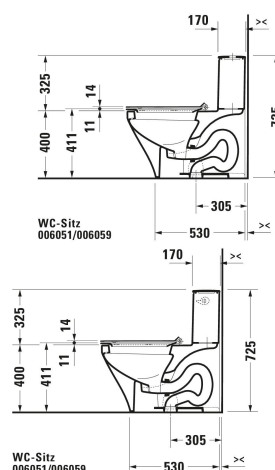
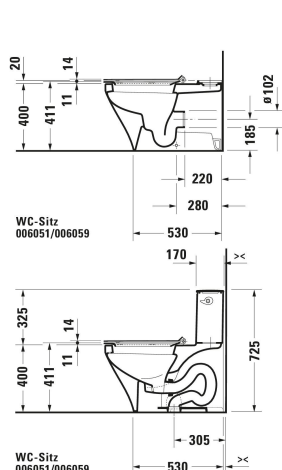
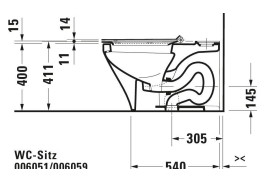
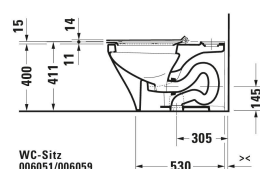


DuraStyle Toilet seat # 0060510000

| < 375 mm > |



Toilet seat	Dimension	Weight	Order number
Automatic close: No, Removable Seat, Hinge material: Stainless steel, Elongated			
Colors			
00 White Alpin			
Variant			
White High Gloss, Hinge colour: Stainless steel		3.100 kg	0060510000
Suitable products			
One-piece toilet 715 mm, Elongated, Flush water quantity: extractor/siphon jet, Flushing rim: Closed, Outlet drain: vertical, 385 x 715 mm Distance of rear panel/outlet: 305 mm, 385 x 715 mm			215701
Wall-mounted toilet Flush water quantity: 4,5/3 l, Washdown model, Flushing rim: Closed, Flush principle: washdown model, Outlet drain horizontal, Incl. invisible fixation, Unified Water Label (UWL) Class: 1, 370 x 620 mm			253709
Toilet close-coupled Flush water quantity: 4,5/3 l, Washdown model, Flushing rim: Closed, Outlet drain: horizontal, Position outlet: Back, Incl. cistern: No, Flush principle: washdown model, For bowl mounted cistern, Length adjustable, Incl. mounting material, Outlet dimensions for Vario connecting bend vertical: 170 - 220 mm, Outlet dimensions for Vario outlet set vertical/horizontal: 70 - 190 mm, Unified Water Label (UWL) Class: 1, 370 x 705 mm			215609
Two-piece toilet 705 mm, Elongated, Flush water quantity: 4,8/4,8 l, extractor/siphon jet, Flushing rim: Closed, Outlet drain vertical, 370 x 705 mm			216001

DuraStyle Toilet seat # 0060510000

|< 375 mm >|

Wall-mounted toilet Flush water quantity: 4,5/3 l, Washdown model, Flushing rim: Rimless, Flush principle: washdown model, Outlet drain horizontal, Incl. invisible fixation, Unified Water Label (UWL) Class: 1, 370 x 620 mm	370 x 620 mm	254209
Wall-mounted toilet Vital Flush water quantity: 4,5/3 l, Washdown model, Flushing rim: Rimless, Flush principle: washdown model, Outlet drain horizontal, Barrier-free version, Incl. invisible fixation, Unified Water Label (UWL) Class: 1, 370 x 700 mm	370 x 700 mm	255909

All drawings contain the necessary measurements which are subject to standard tolerances. They are stated in mm and are non-binding. Exact measurements, in particular for customised installation scenarios, can only be taken from the finished piece.