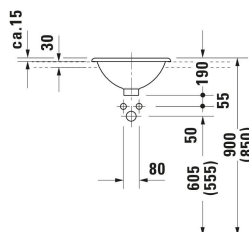
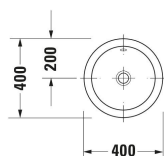


## Architec Built-in basin # 0318400000

| < Ø 400 mm > |



Built-in basin	Dimension	Weight	Order number
Washbasin version: Installation, 400x400 mm, Tap hole platform: No, Overflow: Yes, Type of mounting: counter top, Underside glazed			
<b>Colors</b>			
00 White Alpin			
<b>Variant</b>			
☒ White High Gloss		5.200 kg	0318400000
<b>Accessory</b>			
Push-open waste Suitable for washbasin with overflow, Ø 63,5 mm	Ø 63.5 mm	0.35 kg	005052
<b>Suitable products</b>			
Console vanity unit wall-mounted Number of pull-out compartments: 1, Incl. console: Yes, Tap hole drillings possible, Handle Silver, Soft self-closing automatic with damping, 800 x 550 mm	800 x 550 mm		KT6794
Console vanity unit wall-mounted Number of pull-out compartments: 1, Incl. console: Yes, Tap hole drillings possible, Handle Silver, Soft self-closing automatic with damping, 1000 x 550 mm	1000 x 550 mm		KT6795
Console vanity unit wall-mounted Number of pull-out compartments: 1, Incl. console: Yes, Tap hole drillings possible, Handle Silver, Soft self-closing automatic with damping, 1200 x 550 mm	1200 x 550 mm		KT6796
Console vanity unit wall-mounted Number of pull-out compartments: 2, Incl. console: Yes, Tap hole drillings possible, Handle Silver, Soft self-closing automatic with damping, 1400 x 550 mm	1400 x 550 mm		KT6797 B/L/R
<b>Recommended faucets</b>			

## Architec Built-in basin # 0318400000

| < Ø 400 mm > |

single lever basin mixer L Ceramic cartridge, Height: 262 mm, Spout reach: 136 mm, Connection type for water supply connection: Flexible connecting hoses, Dimension of connection hose: 3/8", Spray mode: Normal spray, Aerator adjustable, recommended operating pressure: 1 - 5 bar, Noise class: I, 166 x 40 mm	166 x 40 mm	C11030001
single lever basin mixer XL Ceramic cartridge, Height: 322 mm, Spout reach: 166 mm, Connection type for water supply connection: Flexible connecting hoses, Dimension of connection hose: 3/8", Spray mode: Normal spray, Aerator adjustable, recommended operating pressure: 1 - 5 bar, Noise class: I, 196 x 40 mm	196 x 40 mm	C11040001
single lever basin mixer Ceramic cartridge, Height: 74 mm, Connection type for water supply connection: Basic Set, Spray mode: Normal spray, Aerator adjustable, Including trim parts, recommended operating pressure: 1 - 5 bar, Noise class: I, Unified Water Label (UWL) Class: 1, 173 x 174 mm	173 x 174 mm	C11070003
single lever basin mixer Ceramic cartridge, Height: 74 mm, Connection type for water supply connection: Basic Set, Spray mode: Normal spray, Aerator adjustable, Including trim parts, recommended operating pressure: 1 - 5 bar, Noise class: I, Unified Water Label (UWL) Class: 1, 173 x 225 mm	173 x 225 mm	C11070004
single lever basin mixer XL Chrome, Ceramic cartridge, Height: 295 mm, Spout reach: 180 mm, Connection type for water supply connection: Flexible connecting hoses, Dimension of connection hose: 3/8", Spray mode: Normal spray, Aerator, Temperature limit adjustable, recommended operating pressure: 1 - 5 bar, Unified Water Label (UWL) Class: 1, 222 x 43 mm	222 x 43 mm	A11040001
2 Hole basin mixer electronic XL Height: 253 mm, Spout reach: 180 mm, Temperature control: Ceramic cartridge, Aerator adjustable, Connection type for water supply connection: Flexible connecting hoses, Dimension of connection hose: 3/8", Temperature limit adjustable, Flow rate (3 bar): 5 l/min, Adjustable water run time, Hygienic flush, Spray mode: Normal spray, Incl. spout, Incl. control unit, Incl. operating unit, Operation type: Controller, without pop-up waste set, Electronic control: power supply, Protection type: IPX4, 230 x 45 mm	230 x 45 mm	D11110008
2 Hole basin mixer electronic XL Height: 253 mm, Spout reach: 180 mm, Temperature control: Ceramic cartridge, Aerator adjustable, Connection type for water supply connection: Flexible connecting hoses, Dimension of connection hose: 3/8", Temperature limit adjustable, Flow rate (3 bar): 5 l/min, Adjustable water run time, Hygienic flush, Spray mode: Normal spray, Incl. spout, Incl. control unit, Incl. operating unit, Operation type: Controller, without pop-up waste set, Electronic control: power supply, Protection type: IPX4, 230 x 45 mm	230 x 45 mm	D11110007
2 Hole basin mixer XL Height: 253 mm, Spout reach: 180 mm, Temperature control: Ceramic cartridge, Aerator adjustable, Connection type for water supply connection: Flexible connecting hoses, Dimension of connection hose: 3/8", Flow rate (3 bar): 5 l/min, Spray mode: Normal spray, Operation type: Mechanical, without pop-up waste set, 230 x 45 mm	230 x 45 mm	D11130002
2 Hole basin mixer XL Height: 253 mm, Spout reach: 180 mm, Temperature control: Ceramic cartridge, Aerator adjustable, Connection type for water supply connection: Flexible connecting hoses, Dimension of connection hose: 3/8", Flow rate (3 bar): 5 l/min, Spray mode: Normal spray, Operation type: Mechanical, without pop-up waste set, 230 x 45 mm	230 x 45 mm	D11130009

**Architec Built-in basin # 0318400000**

**|< Ø 400 mm >|**

---

*All drawings contain the necessary measurements which are subject to standard tolerances. They are stated in mm and are non-binding. Exact measurements, in particular for customised installation scenarios, can only be taken from the finished piece.*