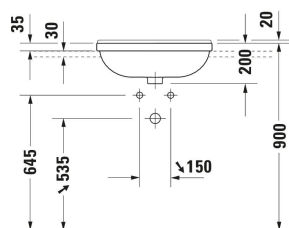
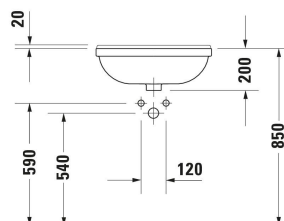
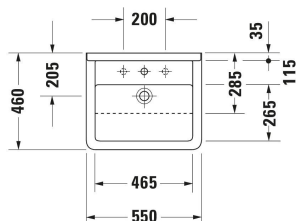


Starck 3 Semi-recessed washbasin # 0310550000

| < 550 mm > |



Semi-recessed washbasin	Dimension	Weight	Order number
Washbasin version: Installation, 550x460 mm, Tap hole platform: Yes, Overflow: Yes, Type of mounting: counter top, Incl. fixings for installation in wooden consoles, Underside glazed			
Colors			
00 White Alpin			
Variant			
● White High Gloss, Number of faucet holes per wash area: 1		14.500 kg	0310550000
Sanitary ceramics with the special WonderGliss surface finish will remain clean and attractive-looking for a long time to come. When ordering WonderGliss please add a "1" as eleventh digit to the model number.			
Accessory			
Push-open waste Suitable for washbasin with overflow, Ø 63,5 mm	Ø 63.5 mm	0.35 kg	005052
Recommended faucets			
single lever basin mixer M Ceramic cartridge, Height: 175 mm, Spout reach: 113 mm, Connection type for water supply connection: Flexible connecting hoses, Dimension of connection hose: 3/8", Spray mode: Normal spray, Aerator adjustable, recommended operating pressure: 1 - 5 bar, Noise class: I, 143 x 40 mm	143 x 40 mm		C11020001

Starck 3 Semi-recessed washbasin # 0310550000

|< 550 mm >|

single lever basin mixer M Chrome, Ceramic cartridge, Height: 170 mm, Spout reach: 139 mm, Connection type for water supply connection: Flexible connecting hoses, Dimension of connection hose: 3/8", Spray mode: Normal spray, Aerator adjustable, Temperature limit adjustable, recommended operating pressure: 1 - 5 bar, Noise class: I, 175 x 50 mm	175 x 50 mm	B11020001
single lever basin mixer M Chrome, Ceramic cartridge, Height: 165 mm, Spout reach: 138,5 mm, Connection type for water supply connection: Flexible connecting hoses, Dimension of connection hose: 3/8", Spray mode: Normal spray, Aerator adjustable, Temperature limit adjustable, recommended operating pressure: 1 - 5 bar, Noise class: I, 175 x 42 mm	175 x 42 mm	B21020001
single lever basin mixer L Ceramic cartridge, Height: 262 mm, Spout reach: 136 mm, Connection type for water supply connection: Flexible connecting hoses, Dimension of connection hose: 3/8", Spray mode: Normal spray, Aerator adjustable, recommended operating pressure: 1 - 5 bar, Noise class: I, 166 x 40 mm	166 x 40 mm	C11030001

All drawings contain the necessary measurements which are subject to standard tolerances. They are stated in mm and are non-binding. Exact measurements, in particular for customised installation scenarios, can only be taken from the finished piece.