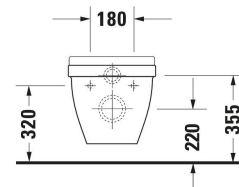
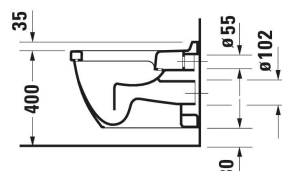
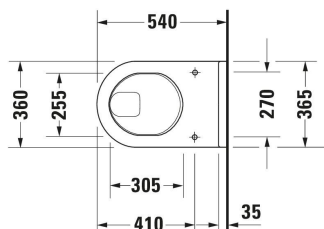


## Starck 3 Wall-mounted toilet # 220109..00 / 220109..00

| < 365 mm > |



Wall-mounted toilet	Dimension	Weight	Order number
Flush water quantity: 6/3 l, Washout model, Flushing rim: Closed, Flush principle: washdown model, Outlet drain horizontal, Unified Water Label (UWL) Class: 2			
<b>Colors</b>			
00 White Alpin 20 HygieneGlaze (an antibacterial ceramic glaze that provides almost indefinite effectiveness)			
<b>Variant</b>			
♦ White High Gloss, Flush water quantity: 6 l		23.100 kg	220109..00
♦ White High Gloss, HygieneGlaze, Flush water quantity: 6 l		23.100 kg	220109..00
Sanitary ceramics with the special WonderGliss surface finish will remain clean and attractive-looking for a long time to come. When ordering WonderGliss please add a "1" as eleventh digit to the model number.			
<b>Accessory for ceramics</b>			
Mounting Suitable for Wall-mounted bidet, Wall-mounted toilet Ø 12 mm		0.28 kg	006500
<b>Accessory</b>			
Noise reduction set		0.2 kg	005090
<b>Suitable products</b>			
Toilet seat Automatic close: No, Hinge material: Stainless steel, 370 x 436 mm	370 x 436 mm		006381
Toilet seat Vital Automatic close: No, Hinge material: Stainless steel, 416 x 371 mm	416 x 371 mm		006241
Toilet seat ring Vital Angled bumper, Continuous hinge rod, 404 x 350 mm	404 x 350 mm		006261
Toilet seat Automatic close: Yes, Removable Seat, Hinge material: Stainless steel, 370 x 431 mm	370 x 431 mm		006389

## Starck 3 Wall-mounted toilet # 220109..00 / 220109..00

|< 365 mm >|

<p>Installation element dry installation for WC Standard 6 l, Powder-coated, Type of installation: In standard lightweight construction, In front of solid wall, Type of mounting: Drywall, Max. projection toilet: 625 mm, Height adjustable: 240 mm, Flush operation: Mechanical, Flush operation position: Front, Adjustable flush volumes, Flush type: Dual Flush, insulated against condensation, Throttle for regulating the flush flow, Self-supporting, Suitable for panelling with plasterboards, 500 x 155 mm</p>	500 x 155 mm	WD1011
<p>Installation element dry installation for WC Odour extraction, Fan activation: Manual, 6 l, Powder-coated, Type of installation: In standard lightweight construction, In front of solid wall, Type of mounting: Drywall, Max. projection toilet: 625 mm, Height adjustable: 240 mm, Flush operation: Mechanical, Flush operation position: Front, Adjustable flush volumes, Flush type: Dual Flush, insulated against condensation, Throttle for regulating the flush flow, Self-supporting, Suitable for panelling with plasterboards, 500 x 155 mm</p>	500 x 155 mm	WD1012
<p>Installation element dry installation for WC Hygienic flush, 6 l, Powder-coated, Type of installation: In standard lightweight construction, In front of solid wall, Type of mounting: Drywall, Max. projection toilet: 625 mm, Height adjustable: 240 mm, Flush operation: Electronic, Flush operation position: Front, Adjustable flush volumes, Flush type: Dual Flush, insulated against condensation, Throttle for regulating the flush flow, Self-supporting, Suitable for panelling with plasterboards, 500 x 155 mm</p>	500 x 155 mm	WD1013
<p>Installation element dry installation for WC Odour extraction, Fan activation: Automatic, Manual, At the touch of a button, Touchless, Hygienic flush, 6 l, Powder-coated, Type of installation: In standard lightweight construction, In front of solid wall, Type of mounting: Drywall, Max. projection toilet: 625 mm, Height adjustable: 240 mm, Flush operation: Electronic, Flush operation position: Front, Adjustable flush volumes, Flush type: Dual Flush, insulated against condensation, Throttle for regulating the flush flow, Self-supporting, Suitable for panelling with plasterboards, 500 x 155 mm</p>	500 x 155 mm	WD1014
<p>Installation element wet installation for WC Type of installation: For walling in and out, Type of mounting: Wet installation, Max. projection toilet: 700 mm, Flush operation: Mechanical, Flush operation position: Front, Adjustable flush volumes, Flush type: Dual Flush, insulated against condensation, Throttle for regulating the flush flow, 445 x 153 mm</p>	445 x 153 mm	WD1015
<p>Installation element dry installation for WC Standard 6 l, Powder-coated, Type of installation: In standard lightweight construction, In front of solid wall, Type of mounting: Drywall, Max. projection toilet: 625 mm, Height adjustable: 240 mm, Flush operation: Mechanical, Flush operation position: FrontTop, Adjustable flush volumes, Flush type: Dual Flush, insulated against condensation, Throttle for regulating the flush flow, Self-supporting, Suitable for panelling with plasterboards, 500 x 155 mm</p>	500 x 155 mm	WD1016

## Starck 3 Wall-mounted toilet # 220109..00 / 220109..00

|< 365 mm >|

<p>Installation element dry installation for WC Basic 6 l, Powder-coated, Type of installation: In standard lightweight construction, In front of solid wall, Type of mounting: Drywall, Max. projection toilet: 625 mm, Height adjustable: 240 mm, Flush operation: Mechanical, Flush operation position: 500 x 155 mm, FrontTop, Adjustable flush volumes, Flush type: Dual Flush, insulated against condensation, Throttle for regulating the flush flow, Self-supporting, Suitable for panelling with plasterboards, 500 x 155 mm</p>	WD1017
<p>Installation element dry installation for WC Standard 6 l, Powder-coated, Type of installation: In standard lightweight construction, In front of solid wall, Type of mounting: Drywall, Max. projection toilet: 625 mm, Height adjustable: 240 mm, Flush operation: Mechanical, Flush operation position: 500 x 155 mm, FrontTop, Adjustable flush volumes, Flush type: Dual Flush, insulated against condensation, Throttle for regulating the flush flow, Self-supporting, Suitable for panelling with plasterboards, 500 x 155 mm</p>	WD1018
<p>Installation element dry installation for WC Basic 6 l, Powder-coated, Type of installation: In standard lightweight construction, In front of solid wall, Type of mounting: Drywall, Max. projection toilet: 625 mm, Height adjustable: 240 mm, Flush operation: Mechanical, Flush operation position: 500 x 155 mm, FrontTop, Adjustable flush volumes, Flush type: Dual Flush, insulated against condensation, Throttle for regulating the flush flow, Self-supporting, Suitable for panelling with plasterboards, 500 x 155 mm</p>	WD1019
<p>Installation element dry installation for WC Basic 6 l, Powder-coated, Type of installation: In standard lightweight construction, In front of solid wall, Type of mounting: Drywall, Max. projection toilet: 625 mm, Height adjustable: 240 mm, Flush operation: Mechanical, Flush operation position: Front, Adjustable flush volumes, Flush type: Dual Flush, insulated against condensation, Throttle for regulating the flush flow, Self-supporting, Suitable for panelling with plasterboards, 500 x 155 mm</p>	WD1020

*All drawings contain the necessary measurements which are subject to standard tolerances. They are stated in mm and are non-binding. Exact measurements, in particular for customised installation scenarios, can only be taken from the finished piece.*