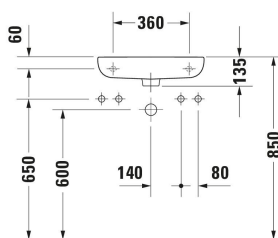
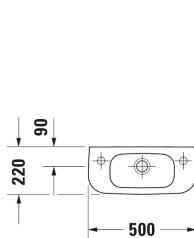


D-Code Hand basin # 07065000082 / 07065000092

| < 500 mm > |



Hand basin	Dimension	Weight	Order number
Semi-circular, Tap hole platform: Yes, Overflow: Yes, Underside glazed, Back side glazed: No, 500 mm			
Colors			
00 White Alpin			
Variant			
● White High Gloss, Rectangular, Number of washing areas: 1 Middle, Number of faucet holes per wash area: 1 Right		7.000 kg	07065000082
● White High Gloss, Rectangular, Number of washing areas: 1 Middle, Number of faucet holes per wash area: 1 Left		7.000 kg	07065000092
Infobox			
Mandatory in combination with a bottle trap			
Accessory			
Push-open waste Suitable for washbasin with overflow, Ø 63,5 mm	Ø 63.5 mm	0.35 kg	005052
Recommended faucets			
single lever basin mixer S Ceramic cartridge, Height: 155 mm, Spout reach: 91 mm, Connection type for water supply connection: Flexible connecting hoses, Dimension of connection hose: 3/8", Spray mode: Normal spray, Aerator adjustable, recommended operating pressure: 1 - 5 bar, Noise class: I, 121 x 40 mm	121 x 40 mm		C11010001
single lever basin mixer S Chrome, Ceramic cartridge, Height: 152 mm, Spout reach: 100,5 mm, Connection type for water supply connection: Flexible connecting hoses, Dimension of connection hose: 3/8", Spray mode: Normal spray, Aerator adjustable, Temperature limit adjustable, recommended operating pressure: 1 - 5 bar, Noise class: I, 137 x 42 mm	137 x 42 mm		B21010001
single lever basin mixer S Chrome, Ceramic cartridge, Height: 155,5 mm, Spout reach: 101 mm, Connection type for water supply connection: Flexible connecting hoses, Dimension of connection hose: 3/8", Spray mode: Normal spray, Aerator adjustable, Temperature limit adjustable, recommended operating pressure: 1 - 5 bar, Noise class: I, 137 x 42 mm	137 x 42 mm		B11010001

D-Code Hand basin # 07065000082 / 07065000092

|< 500 mm >|

All drawings contain the necessary measurements which are subject to standard tolerances. They are stated in mm and are non-binding. Exact measurements, in particular for customised installation scenarios, can only be taken from the finished piece.