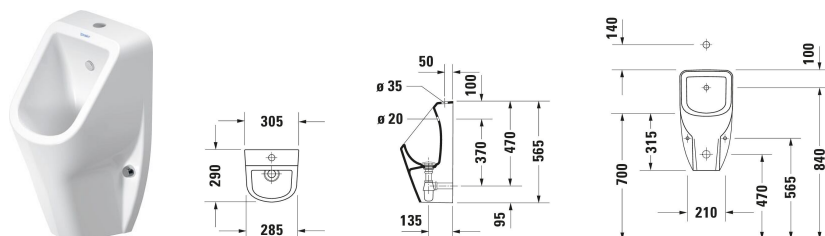


D-Code Urinal # 082830..00

| < 305 mm > |



Urinal	Dimension	Weight	Order number
Flushing rim: Rimless, Flush principle: Jet nozzle, Flush construction: washdown model, Inlet supply position: Top, Incl. intake set, Incl. mounting material, Outlet drain: horizontal, Concealed outlet, Incl. air trap, Incl. jet nozzle, Dimensions of water supply connection: 1/2"			
Colors			
00 White Alpin 20 HygieneGlaze (an antibacterial ceramic glaze that provides almost indefinite effectiveness)			
Variant			
White High Gloss		14.600 kg	082830..00
Infobox			
In combination with adjustable flushometers without ventilation / For flushometers with a distance of 50 mm from wall to centre flush pipe			

All drawings contain the necessary measurements which are subject to standard tolerances. They are stated in mm and are non-binding. Exact measurements, in particular for customised installation scenarios, can only be taken from the finished piece.