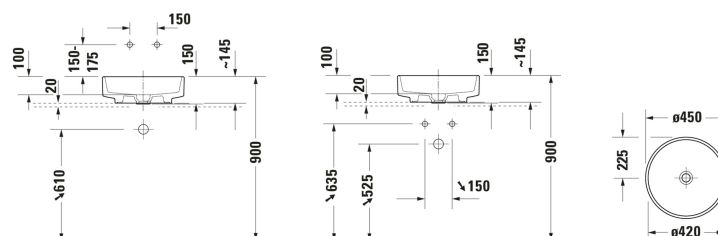


Balcoon Washbowl # 240945..79 / 240945..79 / 240945..79

| < 450 mm > |



Washbowl	Dimension	Weight	Order number
DuraShield, Round, Number of washing areas: 1 Middle, Tap hole platform: No, Overflow: No, Ground, Incl. ceramic drain cover, Incl. slotted waste, Back side glazed: Yes, 450 mm			
Colors			
AA White DuraShield (an antibacterial ceramic glaze that provides almost indefinite effectiveness) AC White Satin Matt DuraShield (an antibacterial ceramic glaze that provides almost indefinite effectiveness) AM Clay terra Matt			
Variant			
☒ White High Gloss	450x145 mm	10.400 kg	240945..79
☒ White Satin Matt	450x145 mm	10.400 kg	240945..79
☒ Clay terra Matt	450x145 mm	10.400 kg	240945..79
Suitable products			
Console Number of cut-outs: 2, Number of washing areas: 2, Tap hole drillings possible, Incl. console supports: No, 1400 x 550 mm	1400 x 550 mm		BA9061
Console Number of cut-outs: 2, Number of washing areas: 2, Tap hole drillings possible, Incl. console supports: No, 1600 x 550 mm	1600 x 550 mm		BA9062
Console Number of cut-outs: 1, Number of washing areas: 1, Tap hole drillings possible, Incl. console supports: No, 1400 x 550 mm	1400 x 550 mm		BA9060
Console Number of cut-outs: 1, Number of washing areas: 1, Tap hole drillings possible, Incl. console supports: No, 1200 x 550 mm	1200 x 550 mm		BA9058
Console Number of cut-outs: 1, Number of washing areas: 1, Tap hole drillings possible, Incl. console supports: No, 1400 x 550 mm	1400 x 550 mm		BA9059
Console Number of cut-outs: 1, Number of washing areas: 1, Tap hole drillings possible, Incl. console supports: No, 800 x 550 mm	800 x 550 mm		BA9056
Console Number of cut-outs: 1, Number of washing areas: 1, Tap hole drillings possible, Incl. console supports: No, 1000 x 550 mm	1000 x 550 mm		BA9057

Balcoon Washbowl # 240945..79 / 240945..79 / 240945..79

|< 450 mm >|

Console Number of cut-outs: 2, Number of washing areas: 2, Tap hole drillings possible, Incl. console supports: No, 1300 x 550 mm	1300 x 550 mm	BA9039
Console Number of cut-outs: 2, Number of washing areas: 2, Tap hole drillings possible, Incl. console supports: No, 1600 x 550 mm	1600 x 550 mm	BA9069
Console Number of cut-outs: 1, Number of washing areas: 1, Tap hole drillings possible, Incl. console supports: No, 800 x 550 mm	800 x 550 mm	BA9063
Console Number of cut-outs: 1, Number of washing areas: 1, Tap hole drillings possible, Incl. console supports: No, 1000 x 550 mm	1000 x 550 mm	BA9064
Console Number of cut-outs: 1, Number of washing areas: 1, Tap hole drillings possible, Incl. console supports: No, 1200 x 550 mm	1200 x 550 mm	BA9065
Console Number of cut-outs: 1, Number of washing areas: 1, Tap hole drillings possible, Incl. console supports: No, 1400 x 550 mm	1400 x 550 mm	BA9066
Console Number of cut-outs: 1, Number of washing areas: 1, Tap hole drillings possible, Incl. console supports: No, 1400 x 550 mm	1400 x 550 mm	BA9067
Console Number of cut-outs: 2, Number of washing areas: 2, Tap hole drillings possible, Incl. console supports: No, 1400 x 550 mm	1400 x 550 mm	BA9068
Console Number of cut-outs: 2, Number of washing areas: 2, Tap hole drillings possible, Incl. console supports: No, 1300 x 550 mm	1300 x 550 mm	BA9049

All drawings contain the necessary measurements which are subject to standard tolerances. They are stated in mm and are non-binding. Exact measurements, in particular for customised installation scenarios, can only be taken from the finished piece.